

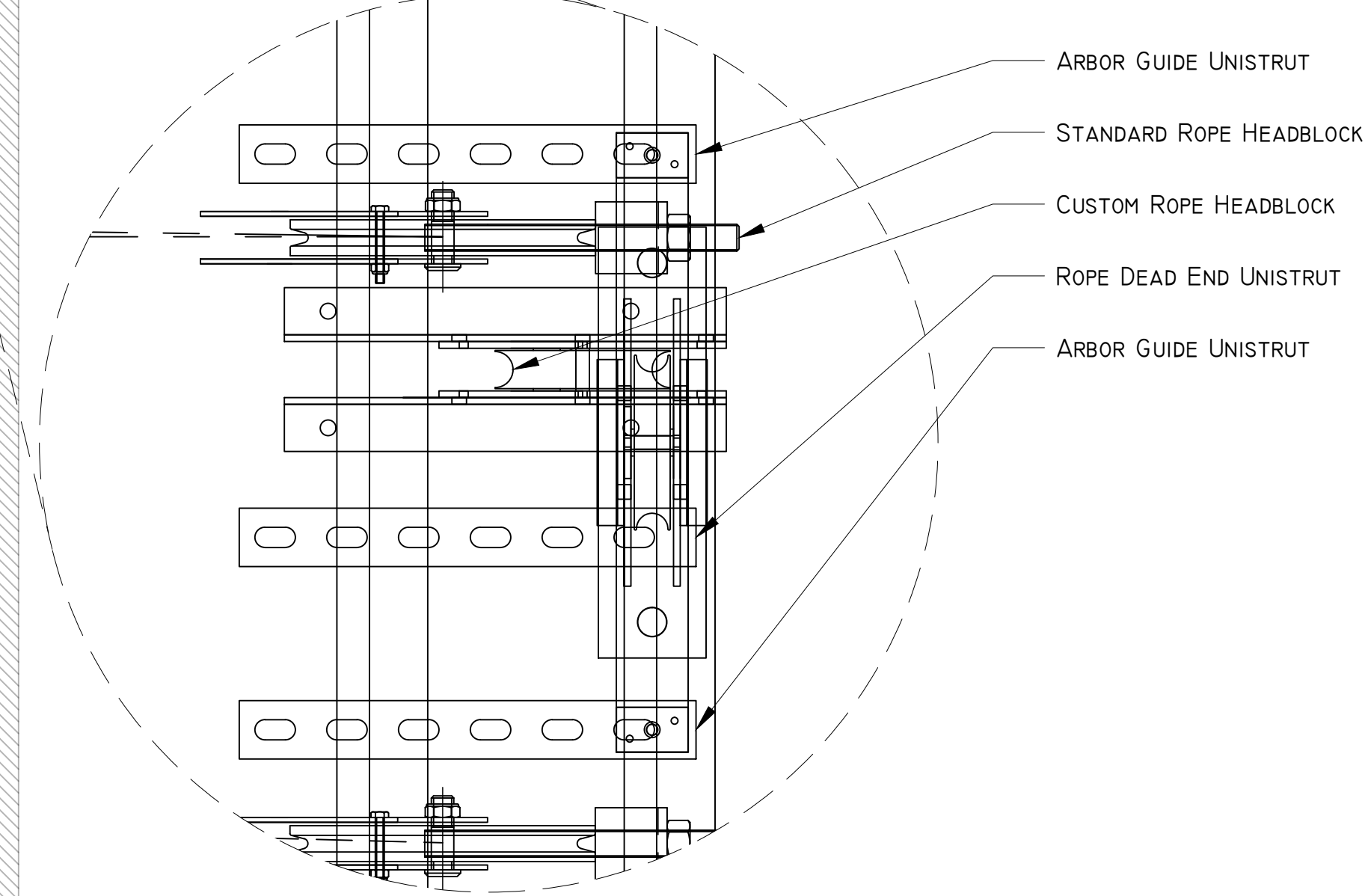
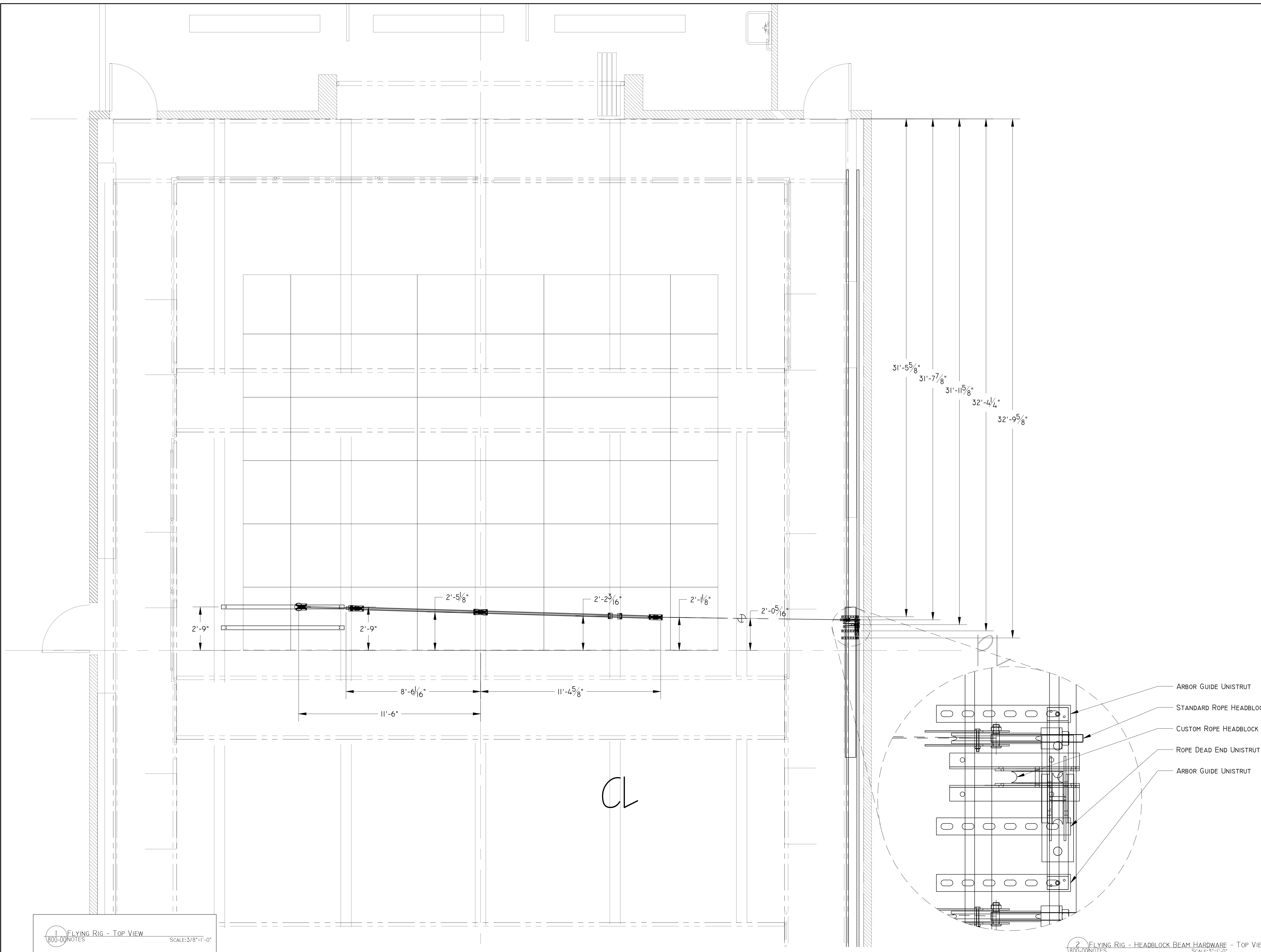
THE ORESTEIA

YALE
SCHOOL OF
DRAMA

222 YORK STREET
NEW HAVEN, CONNECTICUT 06520
203.432.1234

NOTES:

- DIMENSIONS FOR FLYING SYSTEM TAKEN FROM CL AND PL
- DIMENSIONS FOR HEADBLOCK BEAM GEAR TAKEN FROM BACK WALL
- TRACK HUNG ON AN ANGLE
- DIMENSIONS CENTERED ON I-BEAM



1 FLYING RIG - TOP VIEW
SCALE: 3/8"=1'-0"
800-00 NOTES

2 FLYING RIG - HEADBLOCK BEAM HARDWARE - TOP VIEW
SCALE: 3"=1'-0"
800-00 NOTES

THE ORESTEIA	
FLYING RIG - GROUNDPLAN	
DIRECTOR: YAGIL ELIRAZ	
DESIGNER: FUFAN ZHANG	
TECH DIRECTOR: KRYSTIN MATSUMOTO	
DRAFTER: KRYSTIN MATSUMOTO	
SCALE: AS NOTED	
DATE: NOVEMBER 20, 2015	800-00
REVDATE: 12/6/15	PLOTDATE: 12/6/15
SHOW CODE: S205 SETS	

G:\PRODUCTIONS\2015-2016 SEASON\YS02 - ORESTEIA\SCENERY\TECHNICAL\02 DRAFTING\800--FLYING PERSON--K11.DWG

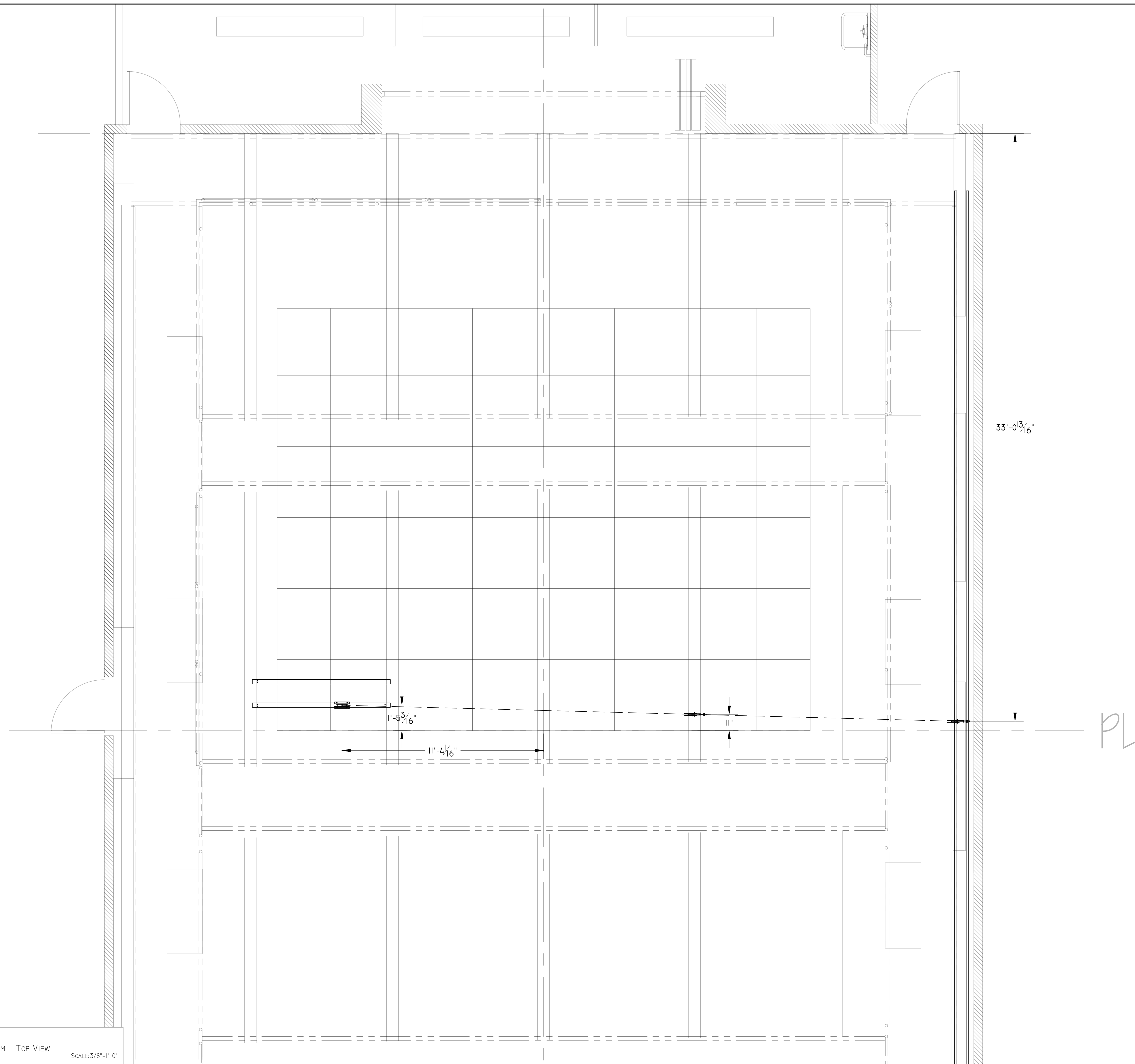
THE ORESTEIA

YALE SCHOOL OF DRAMA

222 YORK STREET
NEW HAVEN, CONNECTICUT 06520
203.432.1234

NOTES:

- DIMENSIONS FOR HEMP SYSTEM TAKEN FROM CL. AND PL
- DIMENSIONS FOR HEADBLOCK BEAM GEAR TAKEN FROM BACK WALL
- DIMENSIONS CENTERED ON I-BEAM



HEMP SYSTEM - TOP VIEW
SCALE: 3/8"=1'-0"
800-01 NOTES

THE ORESTEIA	
FLYING RIG - GROUNDPLAN	
DIRECTOR: YAGIL ELIRAZ	
DESIGNER: FUFAN ZHANG	
TECH DIRECTOR: KRYSTIN MATSUMOTO	
DRAFTER: KRYSTIN MATSUMOTO	
SCALE: AS NOTED	
DATE: NOVEMBER 20, 2015	800-01
REVDATE: 12/6/15 PLOTDATE: 12/6/15	
SHOW CODE: S205 SETS	

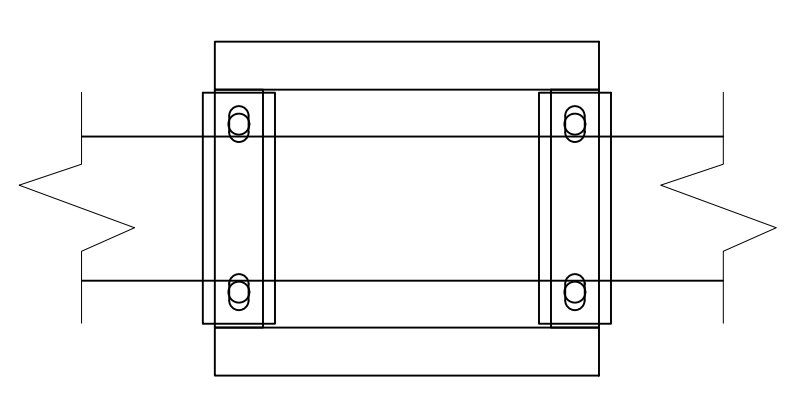
G:\PRODUCTIONS\2015-2016 SEASON\YSO2 - ORESTEIA\SCENERY\TECHNICAL\02 DRAFTING\800--FLYING PERSON--K11.DWG

THE ORESTEIA

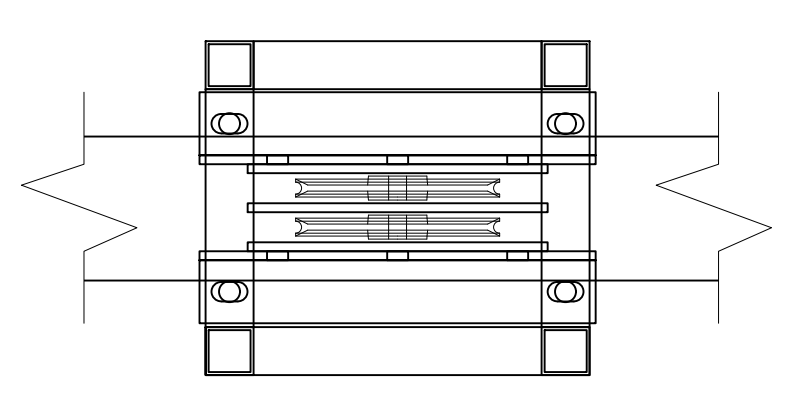
YALE SCHOOL OF DRAMA

222 YORK STREET
NEW HAVEN, CONNECTICUT 06520
203.432.1234

- NOTES:**
- LIFT LINE LOFT BLOCK STEEL MOUNT
 - HEMP LINE LOFT BLOCK STEEL MOUNT
 - LOFT BLOCK PINCH PLATES (MAKE 4)
 - BAY BEAM PINCH PLATES (MAKE 4)
 - TRACK PINCH PLATES (MAKE 7)
 - TRACKING SHEAVE MOUNT
 - TRACK TO I-BEAM PINCH PLATE (MAKE 5)
 - TRACK STOPPER (MAKE 2)
 - BAG AND LABEL ALL SMALL HARDWARE PIECES AS THEY ARE COMPLETED
 - LABEL LOFT BLOCKS ON US SIDE
 - COLLECT ASSOCIATED ATTACHMENT HARDWARE (BOLT SETS, UNISTRUT NUTS, ETC.) AS PIECES ARE COMPLETED

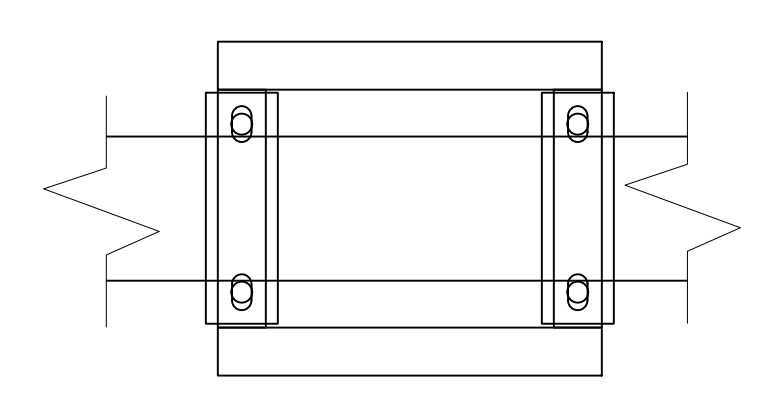


1 LIFT LINE LOFT BLOCK - TOP VIEW (WITHOUT SHEAVES)
800-02 LOFT BLOCK PINCH PLATES ALSO PICTURED
SCALE: 3"=1'-0"

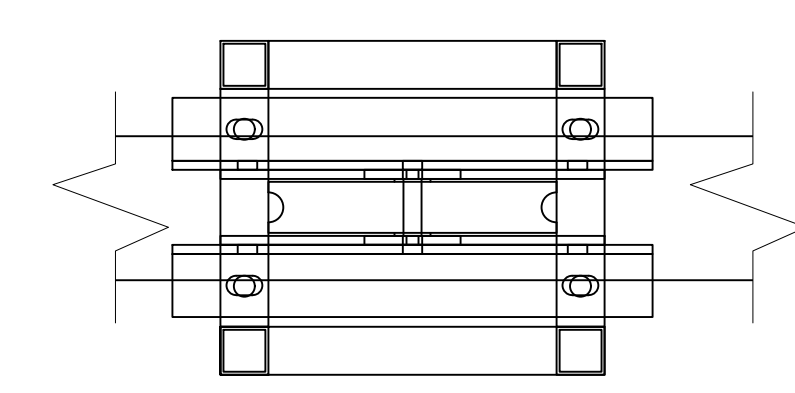


2 LIFT LINE LOFT BLOCK - SECTION VIEW
800-02 CUSTOM 4" RALMARK DOUBLE SHEAVE ASSEMBLY
SCALE: 3"=1'-0"

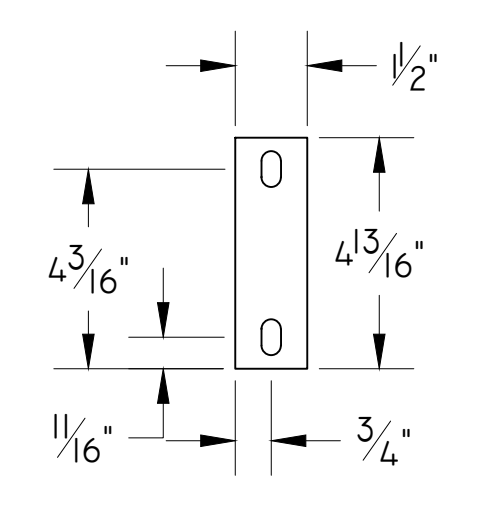
DS
↓



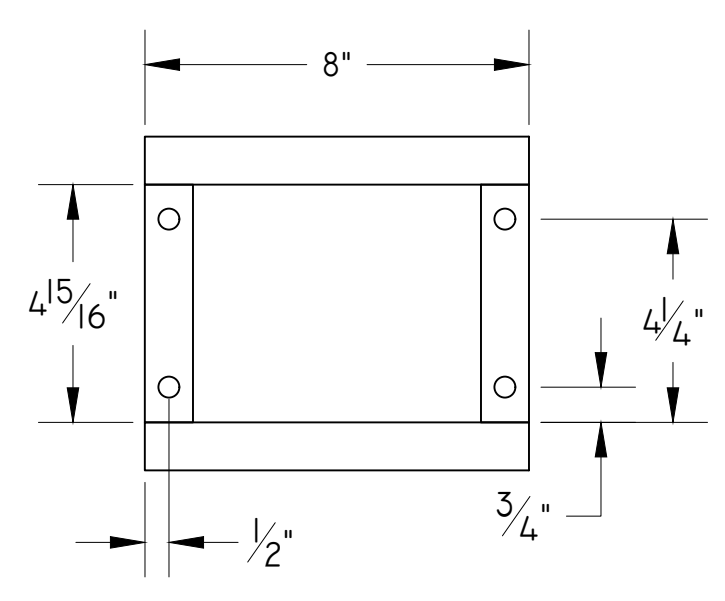
7 HEMP LINE LOFT BLOCK - TOP VIEW (WITHOUT SHEAVES)
800-02 LOFT BLOCK PINCH PLATES ALSO PICTURED
SCALE: 3"=1'-0"



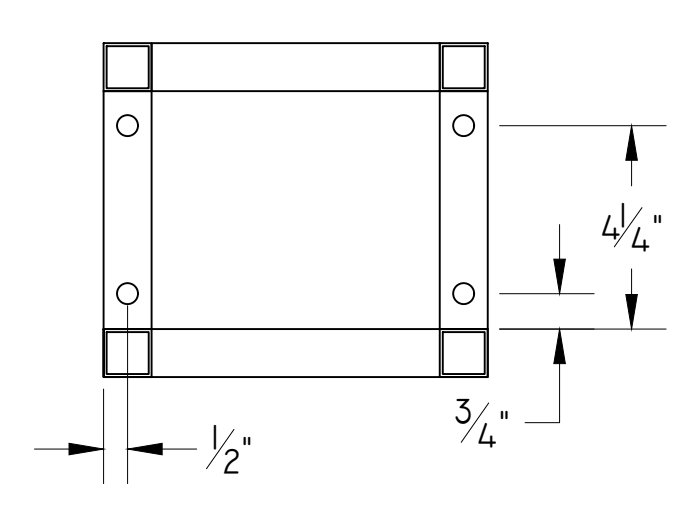
8 HEMP LINE LOFT BLOCK - SECTION VIEW
800-02 ROPE SHEAVE ASSEMBLY
SCALE: 3"=1'-0"



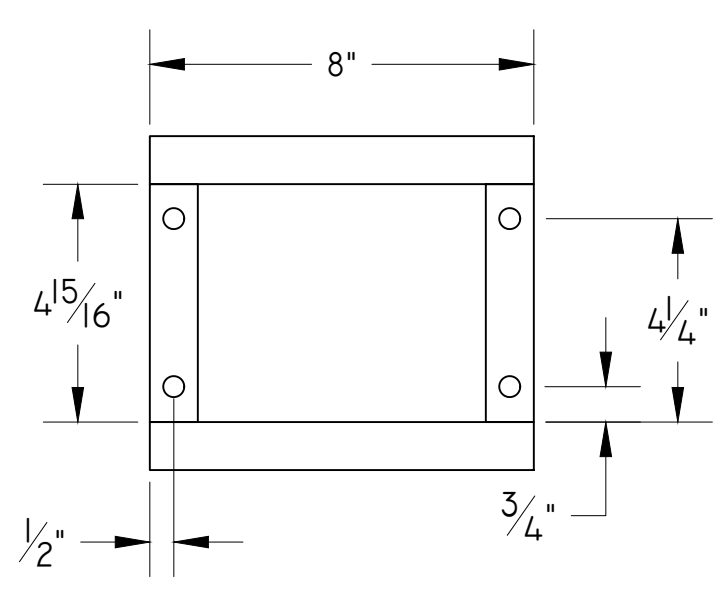
13 LOFT BLOCK PINCH PLATE - TOP VIEW
800-02 3/16"x1 1/2" FB
1/2"x3/4" PUNCH
MAKE 4 TOTAL
SCALE: 3"=1'-0"



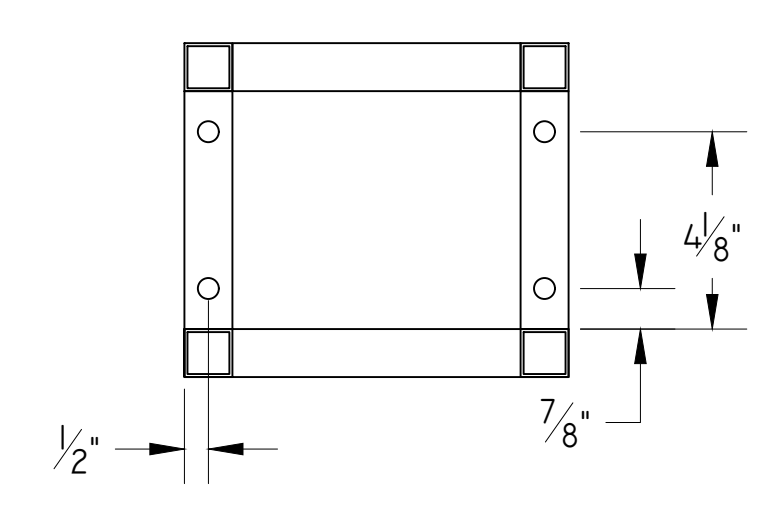
3 LIFT LINE STEEL MOUNT - TOP VIEW
800-02 HOLES 7/16" Ø FOR 3/8" HARDWARE
1"x1" 16GA BOX TUBE
SCALE: 3"=1'-0"



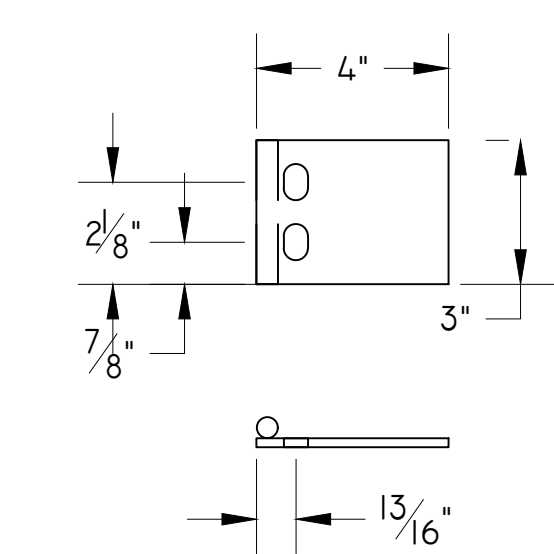
4 LIFT LINE STEEL MOUNT - SECTION VIEW
800-02 HOLES 7/16" Ø FOR 3/8" HARDWARE
1"x1" 16GA BOX TUBE
SCALE: 3"=1'-0"



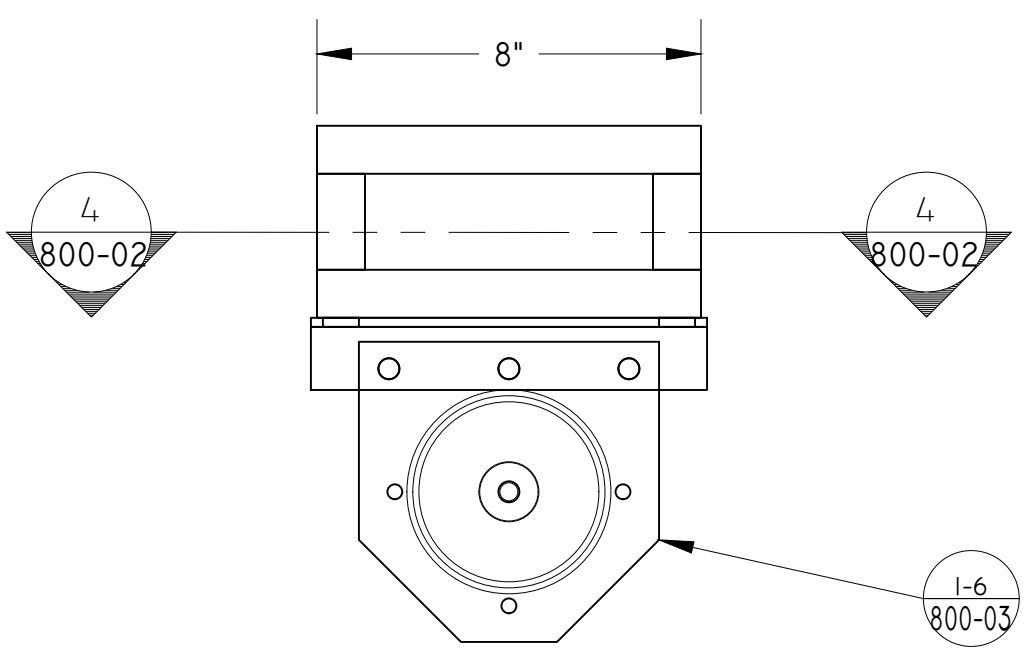
9 HEMP LINE STEEL MOUNT - TOP VIEW
800-02 HOLES 7/16" Ø FOR 3/8" HARDWARE
1"x1" 16GA BOX TUBE
SCALE: 3"=1'-0"



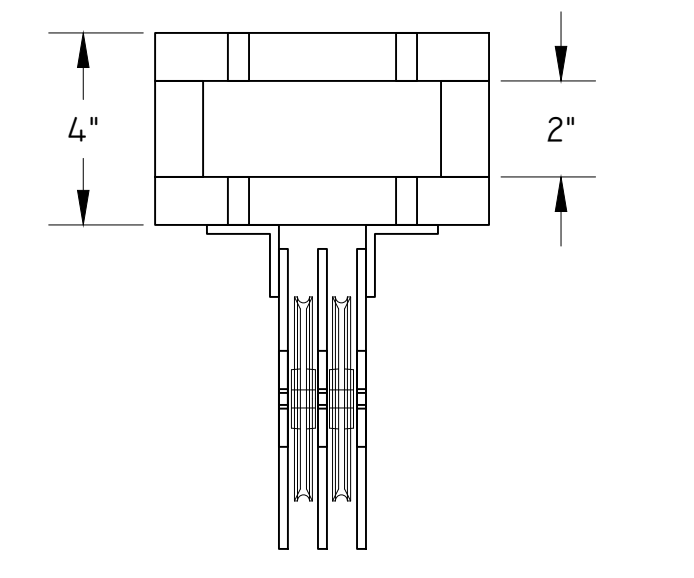
10 HEMP LINE STEEL MOUNT - SECTION VIEW
800-02 HOLES 7/16" Ø FOR 3/8" HARDWARE
1"x1" 16GA BOX TUBE
SCALE: 3"=1'-0"



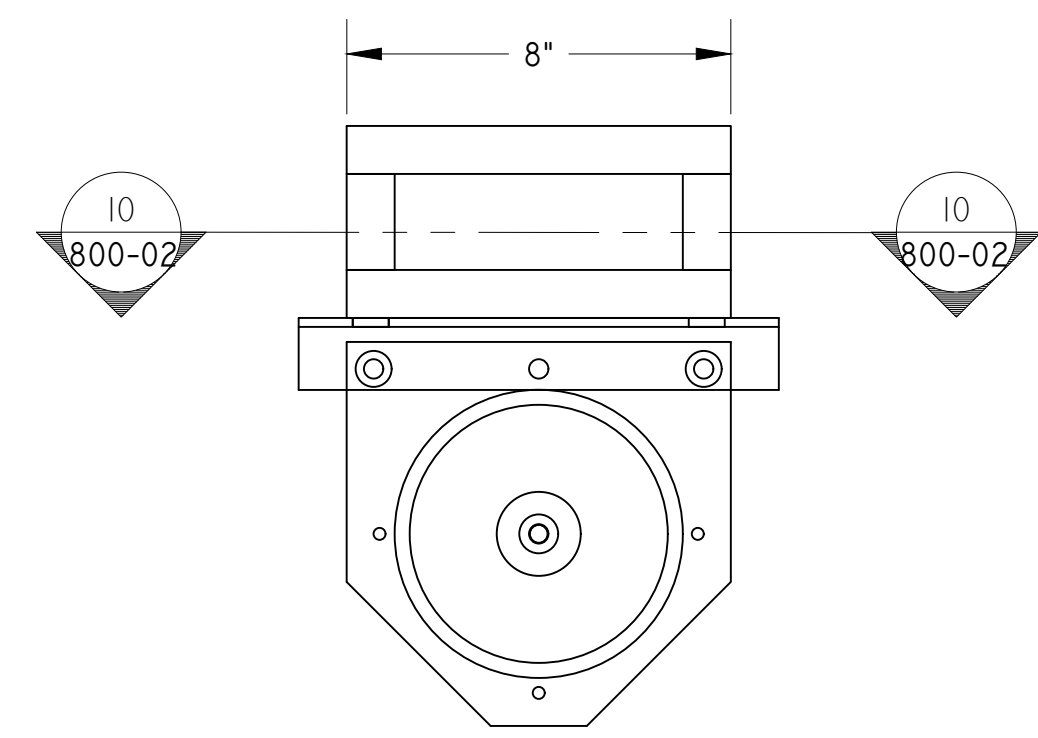
14 BAY BEAM PINCH PLATE - TOP AND FRONT VIEWS
800-02 3/16"x2" FB
1/2" ROD
1/2"x3/4" PUNCH
MAKE 4 TOTAL
SCALE: 3"=1'-0"



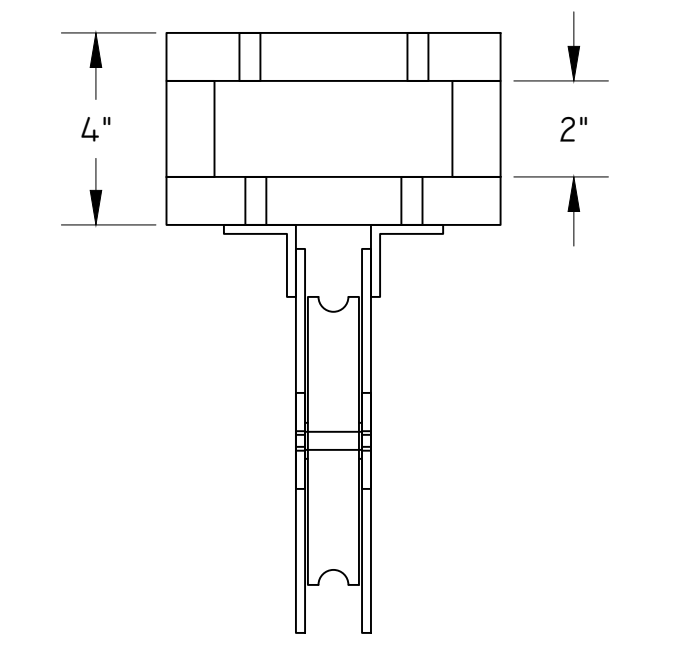
5 LIFT LINE STEEL MOUNT - FRONT VIEW
800-02 HOLES 7/16" Ø FOR 3/8" HARDWARE
1"x1" 16GA BOX TUBE
SCALE: 3"=1'-0"



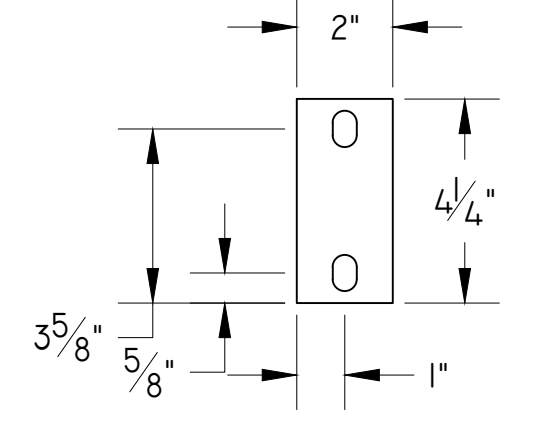
6 LIFT LINE STEEL MOUNT - SIDE VIEW
800-02 HOLES 7/16" Ø FOR 3/8" HARDWARE
1"x1" 16GA BOX TUBE
SCALE: 3"=1'-0"



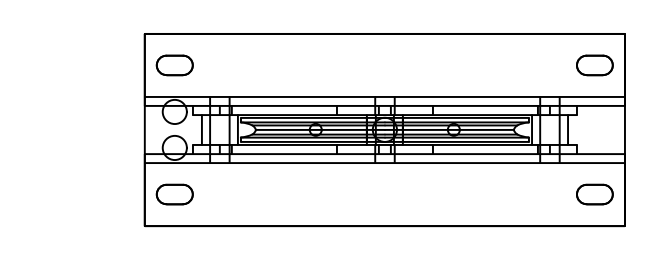
11 HEMP LINE STEEL MOUNT - FRONT VIEW
800-02 HOLES 7/16" Ø FOR 3/8" HARDWARE
1"x1" 16GA BOX TUBE
SCALE: 3"=1'-0"



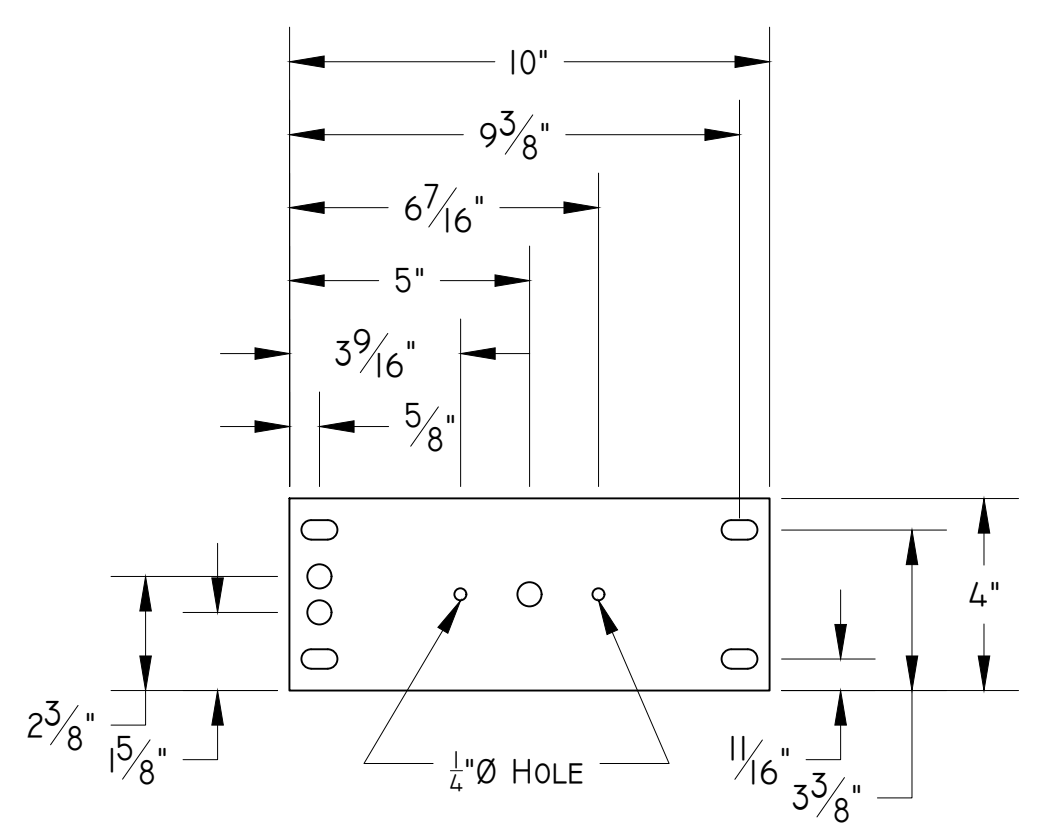
12 HEMP LINE STEEL MOUNT - SIDE VIEW
800-02 HOLES 7/16" Ø FOR 3/8" HARDWARE
1"x1" 16GA BOX TUBE
SCALE: 3"=1'-0"



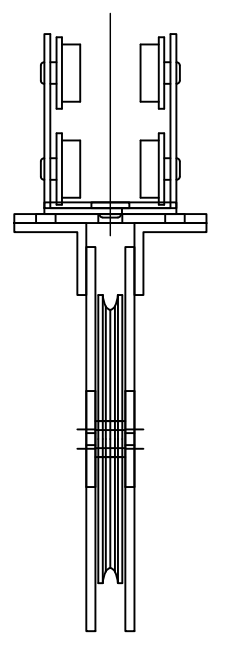
15 TRACK PINCH PLATE - TOP VIEW
800-02 3/16"x2" FB
1/2"x3/4" PUNCH
MAKE 7 TOTAL
SCALE: 3"=1'-0"



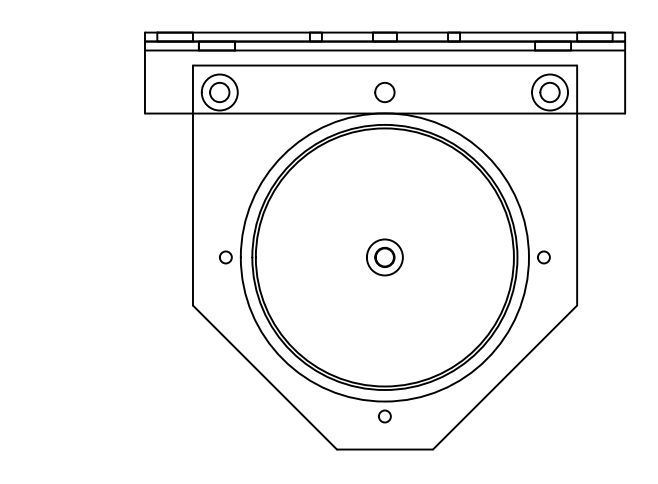
16 TRACKING SHEAVE - TOP VIEW (WITH SHEAVE)
800-02 STANDARD 6" RALMARK ASSEMBLY
SCALE: 3"=1'-0"



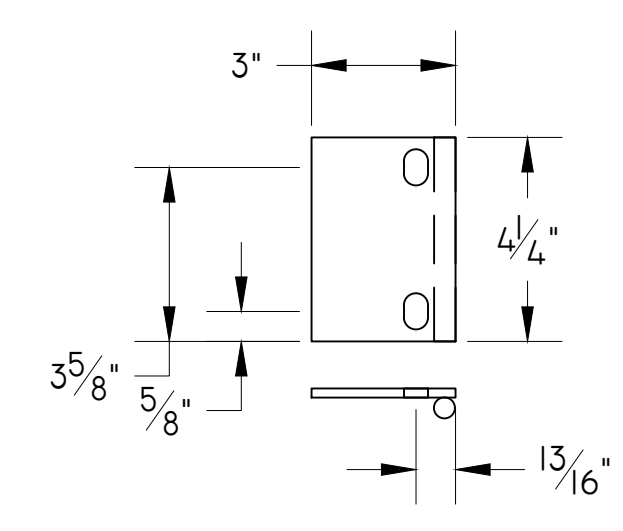
18 TRACKING SHEAVE - TOP VIEW (WITHOUT SHEAVE)
800-02 3/16"x2" FB
1/2"x3/4" PUNCH
7/16" HOLE (UNLESS NOTED)
FIT TO CARRIER
SCALE: 3"=1'-0"



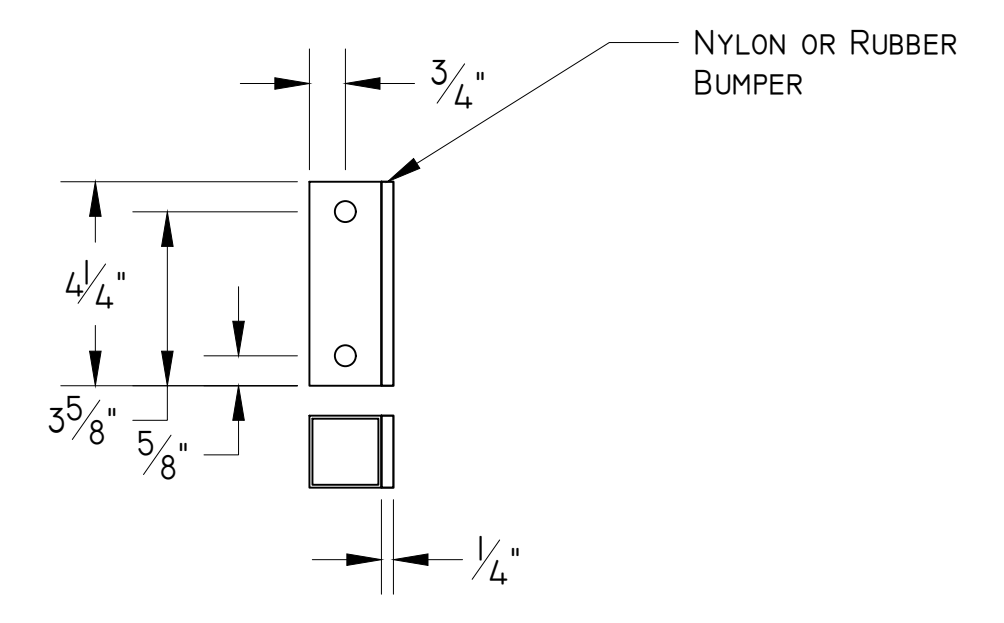
19 TRACKING SHEAVE, PLATE, CARRIER, AND TRACK ASSEMBLED - SIDE VIEW
800-02 NOTES
SCALE: 3"=1'-0"



17 TRACKING SHEAVE - FRONT VIEW
800-02 STANDARD 6" RALMARK ASSEMBLY
SCALE: 3"=1'-0"



20 TRACK TO I-BEAM PINCH PLATE - TOP AND FRONT VIEW
800-02 3/16"x2" FB
1/2" ROD
1/2"x3/4" PUNCH
MAKE 5 TOTAL
SCALE: 3"=1'-0"

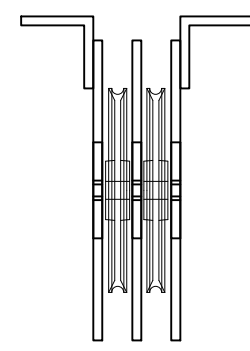
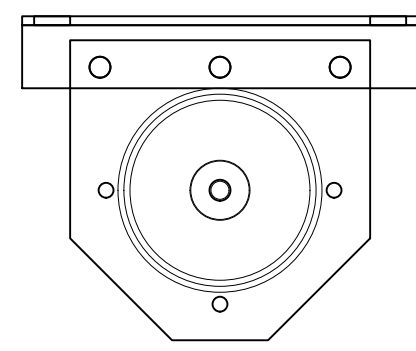


21 TRACK STOPPER - TOP AND FRONT VIEW
800-02 1/2"x1 1/2" 16GA BOX TUBE
7/16" HOLE FOR 3/8" HARDWARE
NYLON OR RUBBER BUMPER
MAKE 2 TOTAL
SCALE: 3"=1'-0"

G:\PRODUCTIONS\2015-2016 SEASON\YSD2 - ORESTEIA\SCENERY\TECHNICAL\02 DRAFTING\800--FLYING PERSON--K11.DWG

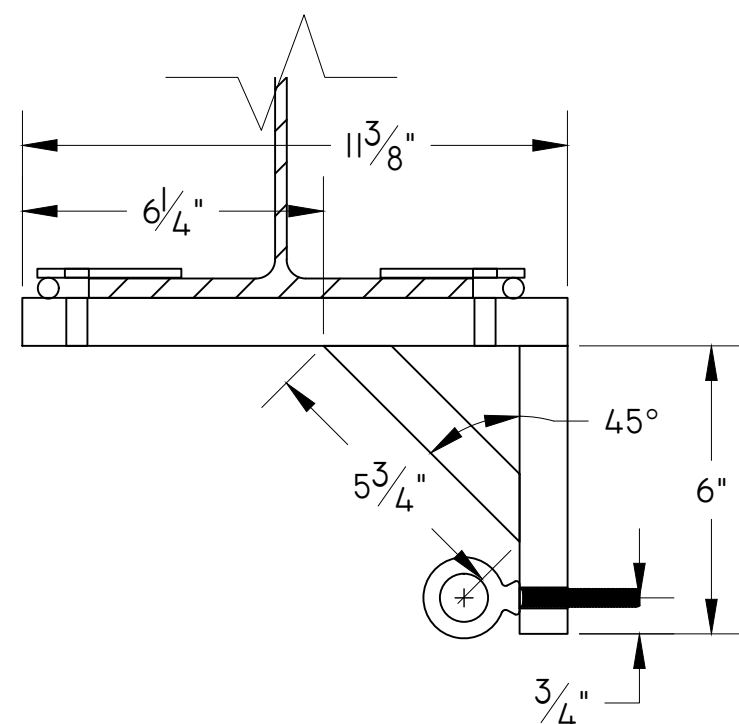
THE ORESTEIA
FLYING PERSON - CUSTOM HARDWARE
DIRECTOR: YAGIL ELIRAZ
DESIGNER: FUFAN ZHANG
TECH DIRECTOR: KRYSTIN MATSUMOTO
DRAFTER: KRYSTIN MATSUMOTO
SCALE: AS NOTED
DATE: NOVEMBER 9, 2015
REVDATE: 12/6/15 | PLOTDATE: 12/6/15
SHOW CODE: S205 SETS

800-02

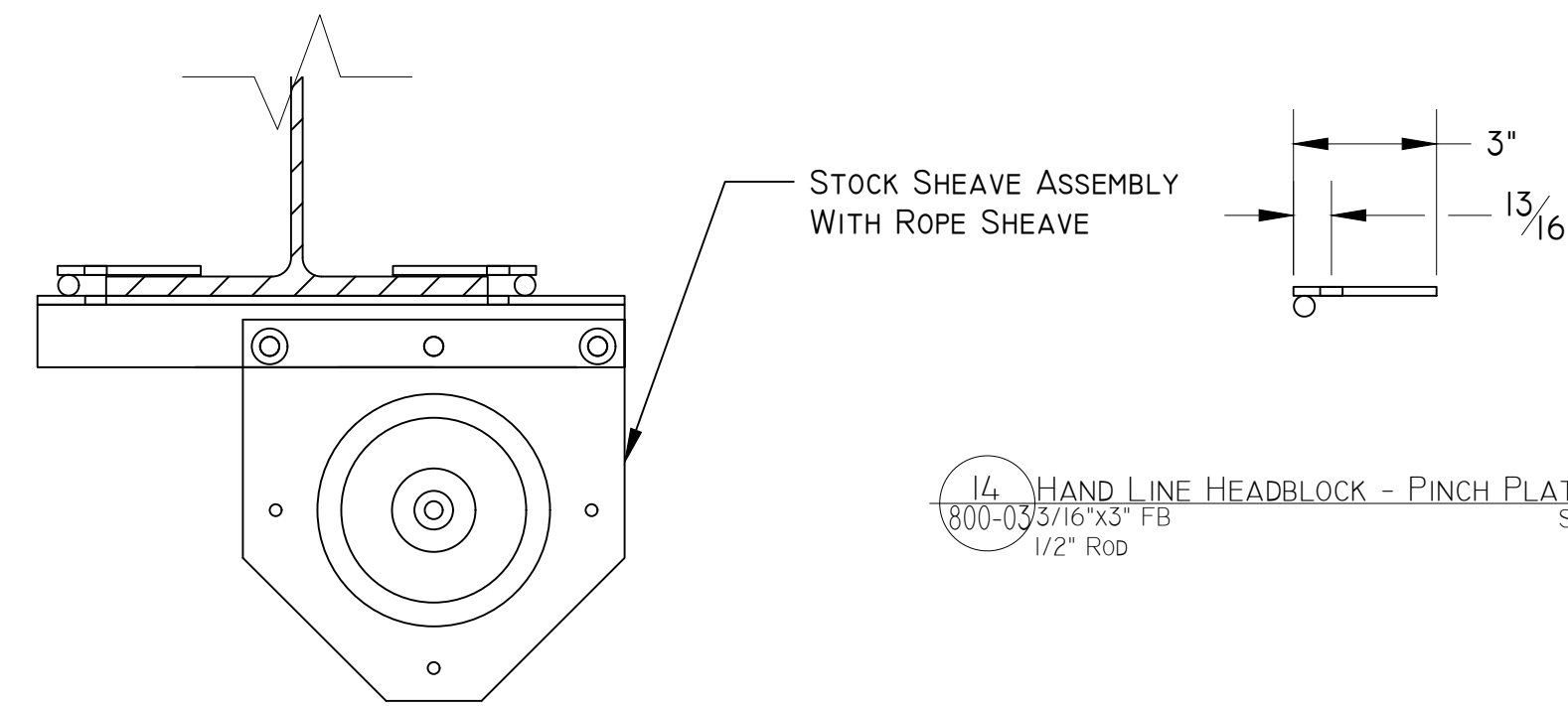


1 4" RALMARK SHEAVE ASSEMBLY - FRONT VIEW
SCALE: 3"=1'-0"

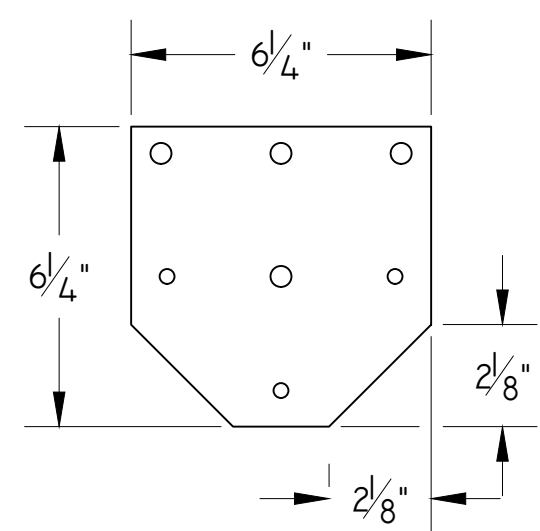
2 4" RALMARK SHEAVE ASSEMBLY - SIDE VIEW
SCALE: 3"=1'-0"



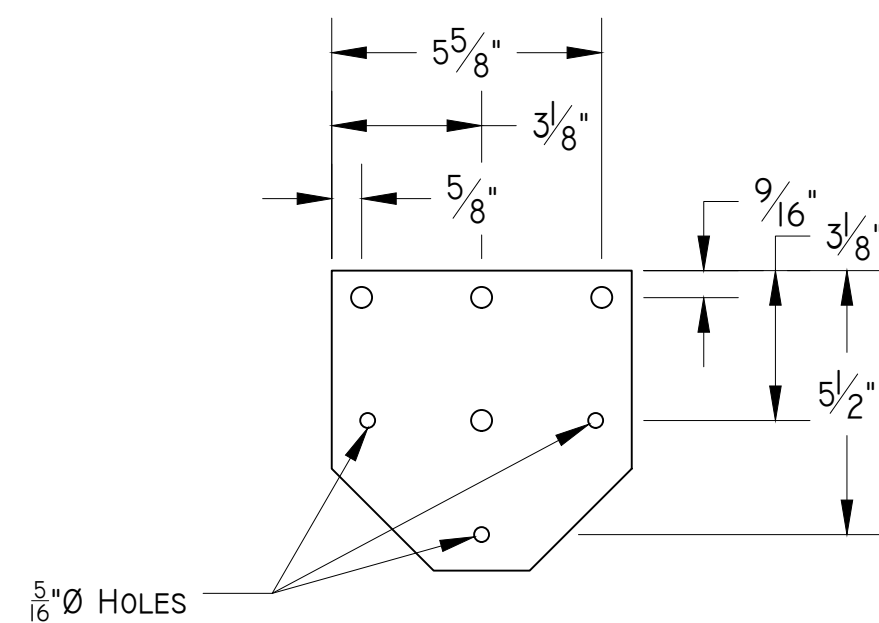
7 1/4" GAC TERMINATION - FRONT VIEW
SCALE: 3"=1'-0"



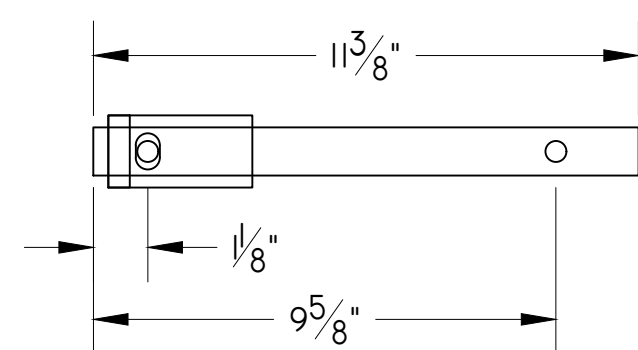
14 HAND LINE HEADBLOCK - PINCH PLATE - FRONT VIEW
SCALE: 3"=1'-0"



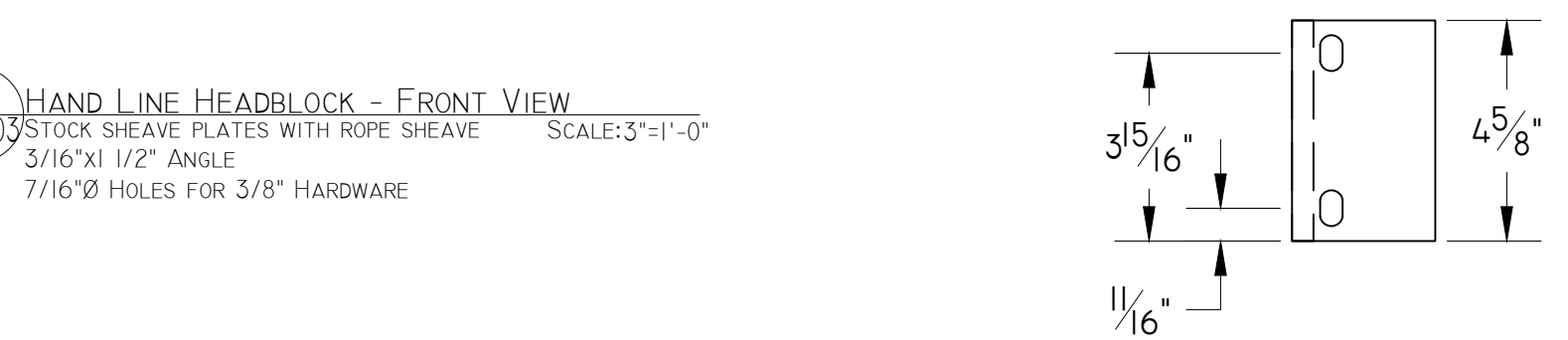
3 4" RALMARK SHEAVE PLATES - OVERALL DIMS - FRONT VIEW
SCALE: 3"=1'-0"



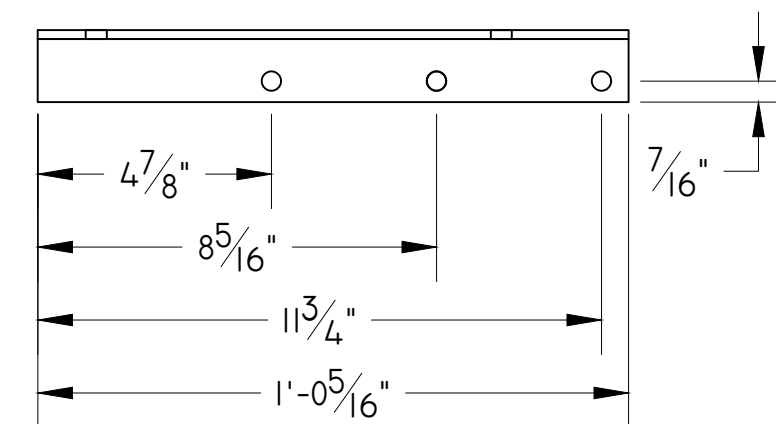
4 4" RALMARK SHEAVE PLATES - HOLE PLACEMENT - FRONT VIEW
SCALE: 3"=1'-0"



8 1/4" GAC TERMINATION - TOP VIEW
SCALE: 3"=1'-0"

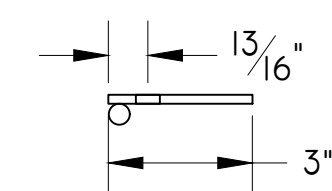


11 HAND LINE HEADBLOCK - FRONT VIEW
SCALE: 3"=1'-0"

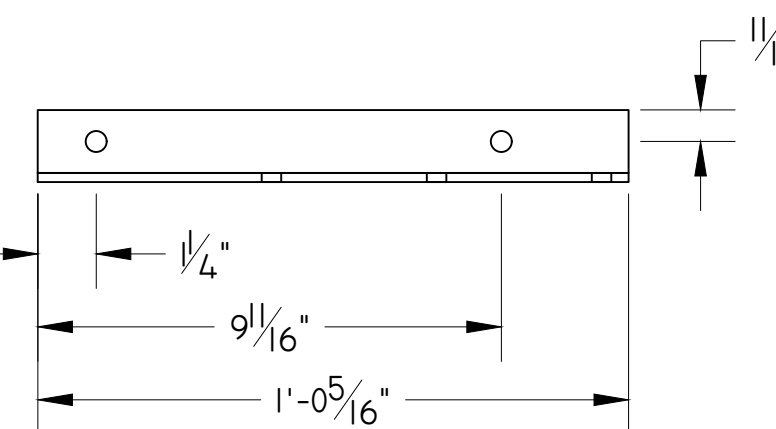


15 HAND LINE HEADBLOCK - PINCH PLATE - TOP VIEW
SCALE: 3"=1'-0"

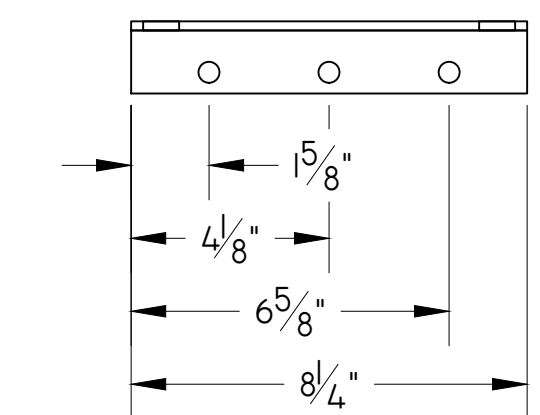
12 HAND LINE HEADBLOCK - ANGLE - FRONT VIEW - R&R MAKE 2 TOTAL
SCALE: 3"=1'-0"



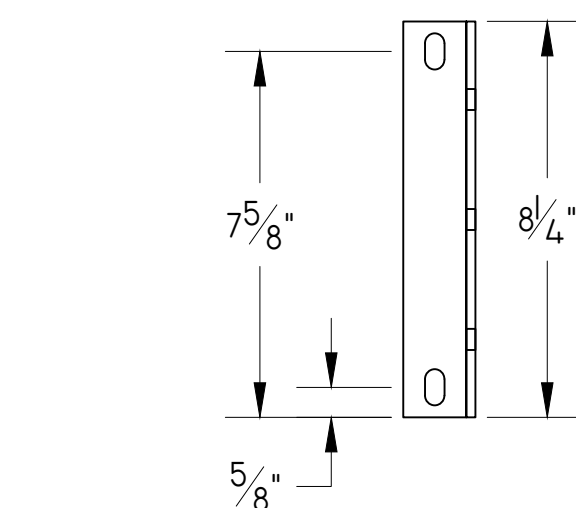
9 1/4" GAC TERMINATION PINCH PLATE - FRONT VIEW
SCALE: 3"=1'-0"



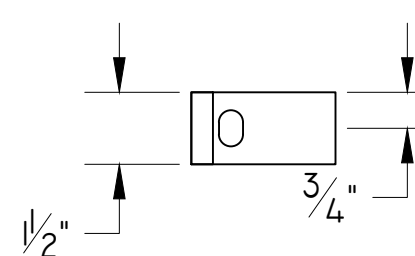
13 HAND LINE HEADBLOCK - ANGLE - TOP VIEW
SCALE: 3"=1'-0"



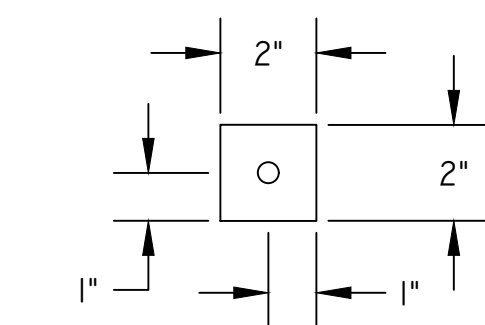
5 4" RALMARK SHEAVE ANGLE - FRONT VIEW
SCALE: 3"=1'-0"



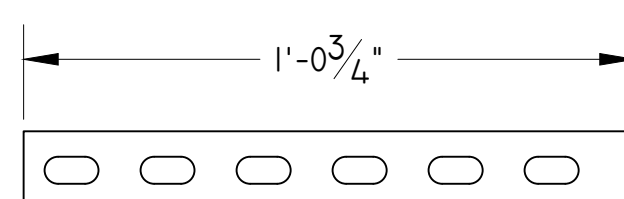
6 4" RALMARK SHEAVE ANGLE - TOP VIEW
SCALE: 3"=1'-0"



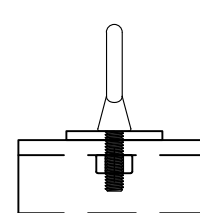
10 1/4" GAC TERMINATION PINCH PLATE - TOP VIEW
SCALE: 3"=1'-0"



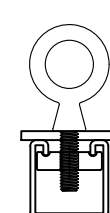
16 EYEBOLT TO UNISTRUT - TOP VIEW - MAKE 5 TOTAL
SCALE: 3"=1'-0"



19 UNISTRUT FOR WIRE GUIDES AND HAND LINE DEAD - TOP VIEW
SCALE: 3"=1'-0"



17 EYEBOLT TO UNISTRUT - FRONT VIEW
SCALE: 3"=1'-0"



18 EYEBOLT TO UNISTRUT - FRONT VIEW
SCALE: 3"=1'-0"

THE ORESTEIA

YALE SCHOOL OF DRAMA

222 YORK STREET
NEW HAVEN, CONNECTICUT 06520
203.432.1234

NOTES:

- 4" LOFT BLOCK ASSEMBLY ATTACH DIRECTLY TO STEEL FRAME
- 1/4" GAC TERMINATION ADD 3/8" EYEBOLT
- HAND LINE HEADBLOCK MATCH CUSTOM ANGLE HOLES TO STOCK SHEAVE PLATES ADD ARBOR SHIMS TO MAKE SURE SHEAVE SPINS FREELY
- EYE BOLT TO UNISTRUT CONNECTIONS ARE FOR WIRE GUIDES AND THE HAND LINE TERMINATION
- BAG AND LABEL ALL SMALL HARDWARE PIECES AS THEY ARE COMPLETED
- COLLECT ASSOCIATED ATTACHMENT HARDWARE (BOLT SETS, UNISTRUT NUTS, ETC.) AS PIECES ARE COMPLETED

THE ORESTEIA

FLYING PERSON - CUSTOM HARDWARE

DIRECTOR: YAGIL ELIRAZ

DESIGNER: FUFAN ZHANG

TECH DIRECTOR: KRYSTIN MATSUMOTO

DRAFTER: KRYSTIN MATSUMOTO

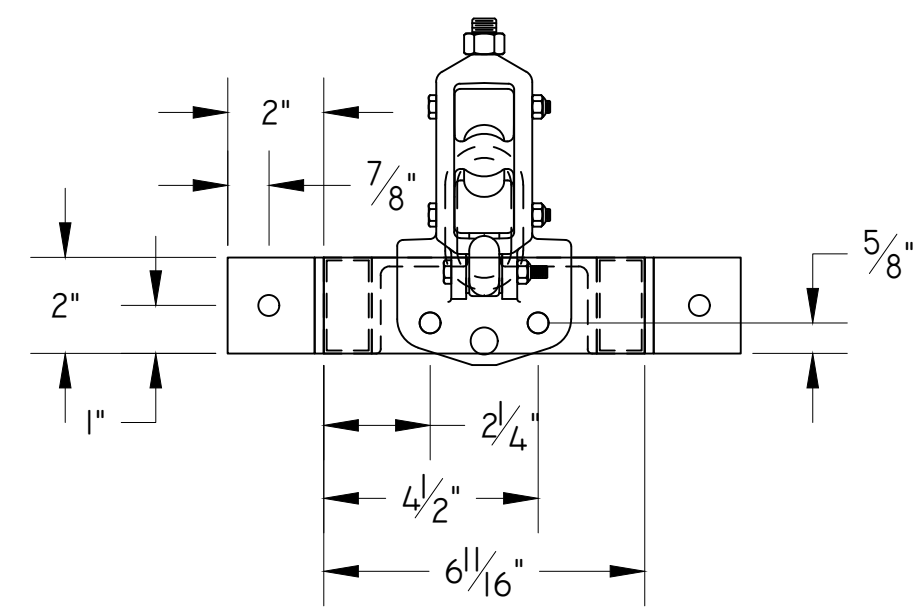
SCALE: AS NOTED

DATE: NOVEMBER 10, 2015

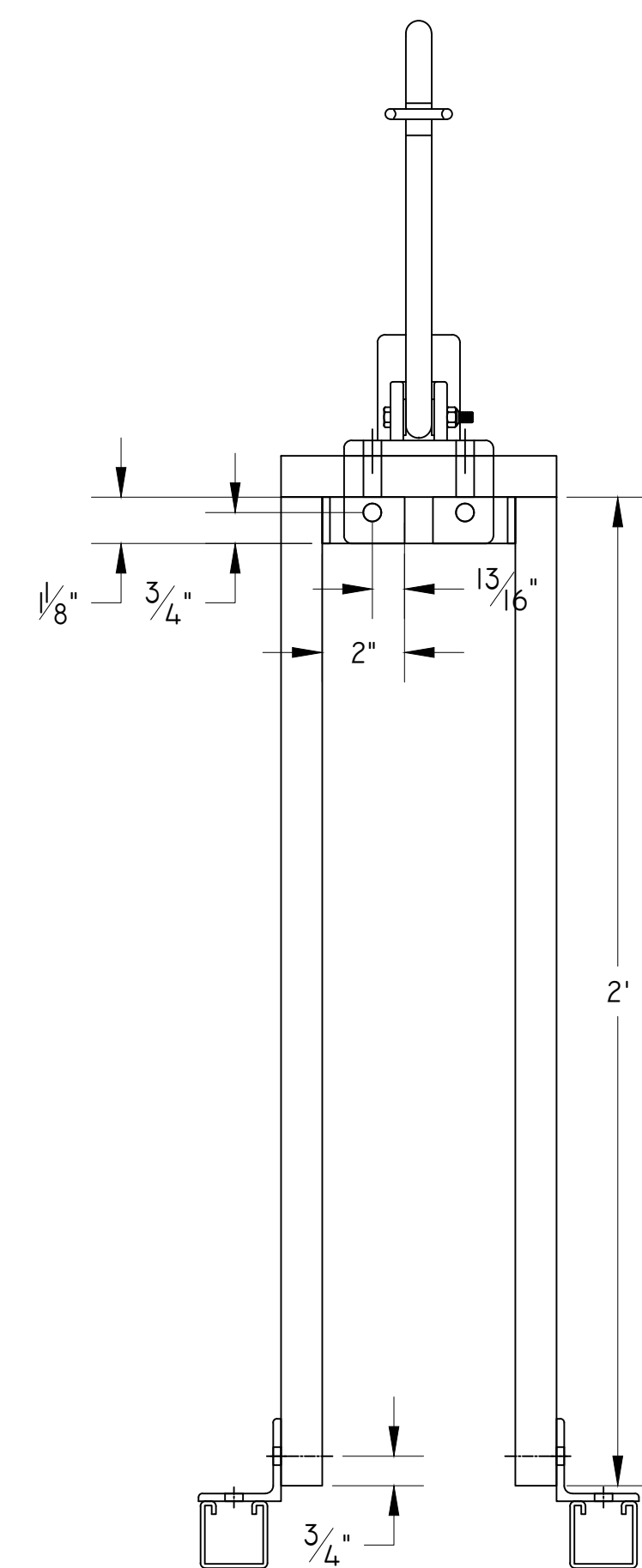
REVDATE: 12/6/15 PLOTDATE: 12/6/15

SHOW CODE: S205 SETS

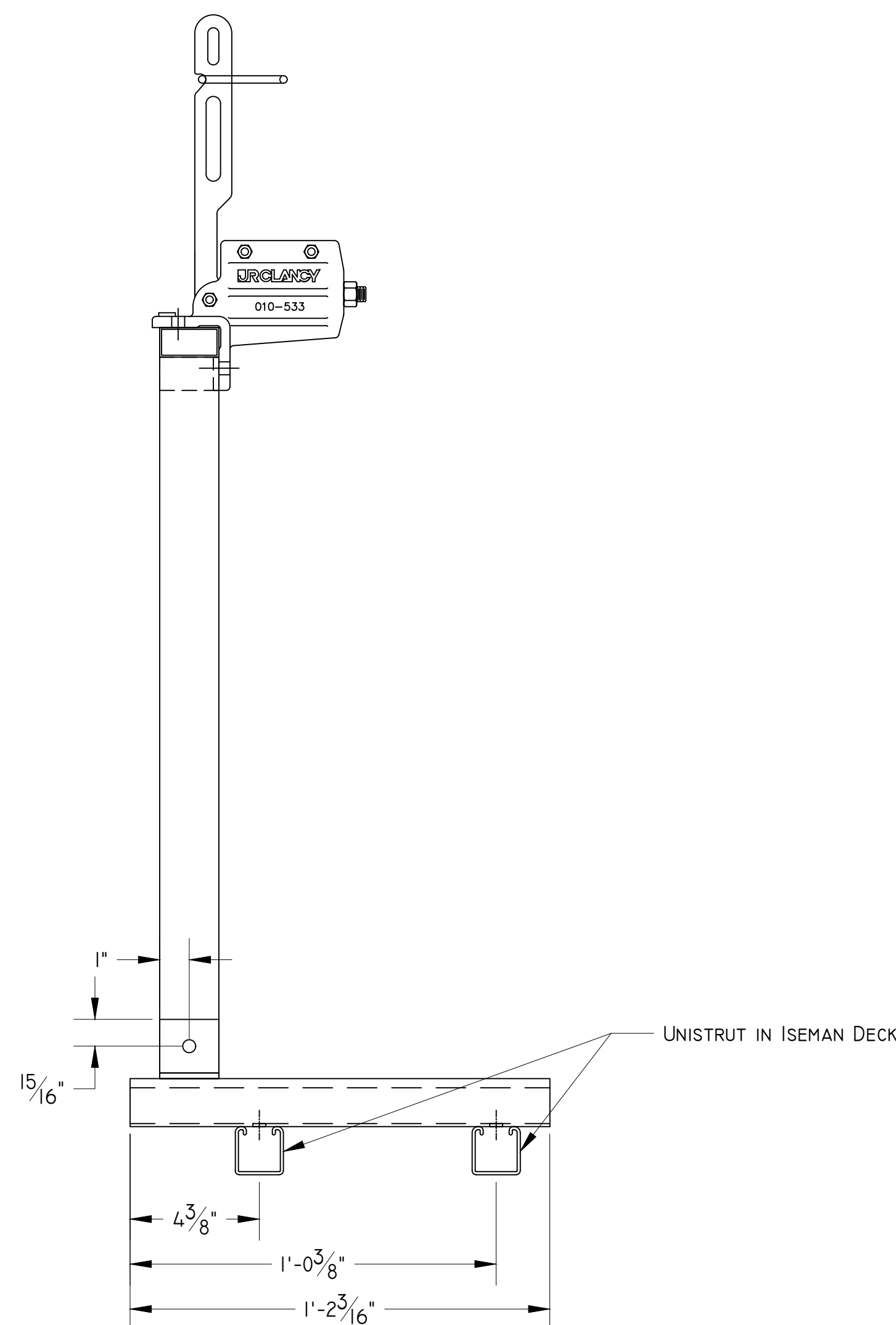
800-03



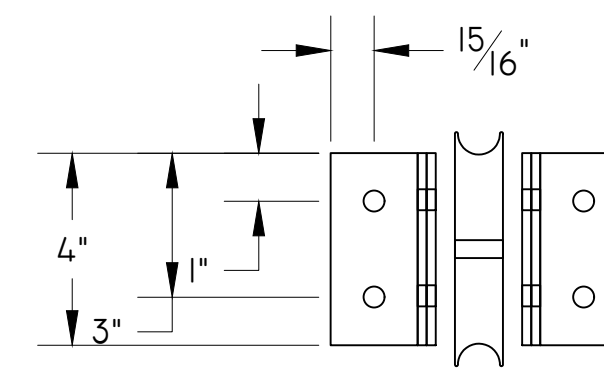
1 ROPE LOCK - TOP VIEW
 800-04 1"x2" 16GA REC TUBE SCALE:3"-1"-0"
 2"x2"x3/16" ANGLE
 FIT HOLES TO ROPE LOCK
 7/16" HOLES FOR 3/8" HARDWARE



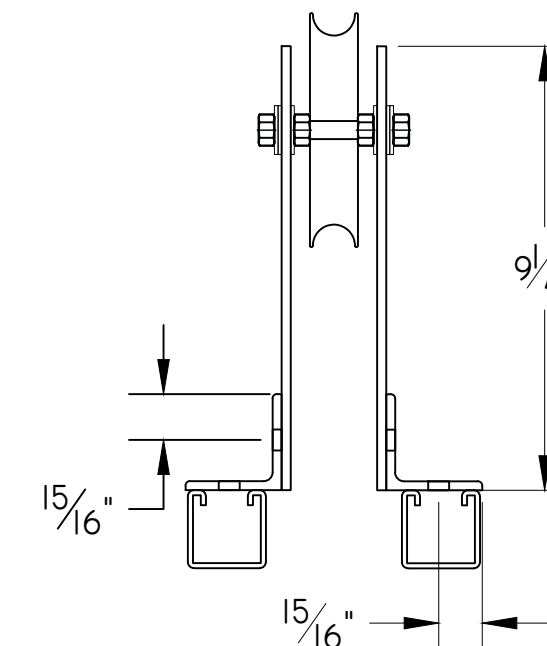
2 ROPE LOCK - FRONT VIEW
 800-04 1"x2" 16GA REC TUBE SCALE:3"-1"-0"
 2"x2"x3/16" ANGLE
 FIT HOLES TO ROPE LOCK
 7/16" HOLES FOR 3/8" HARDWARE



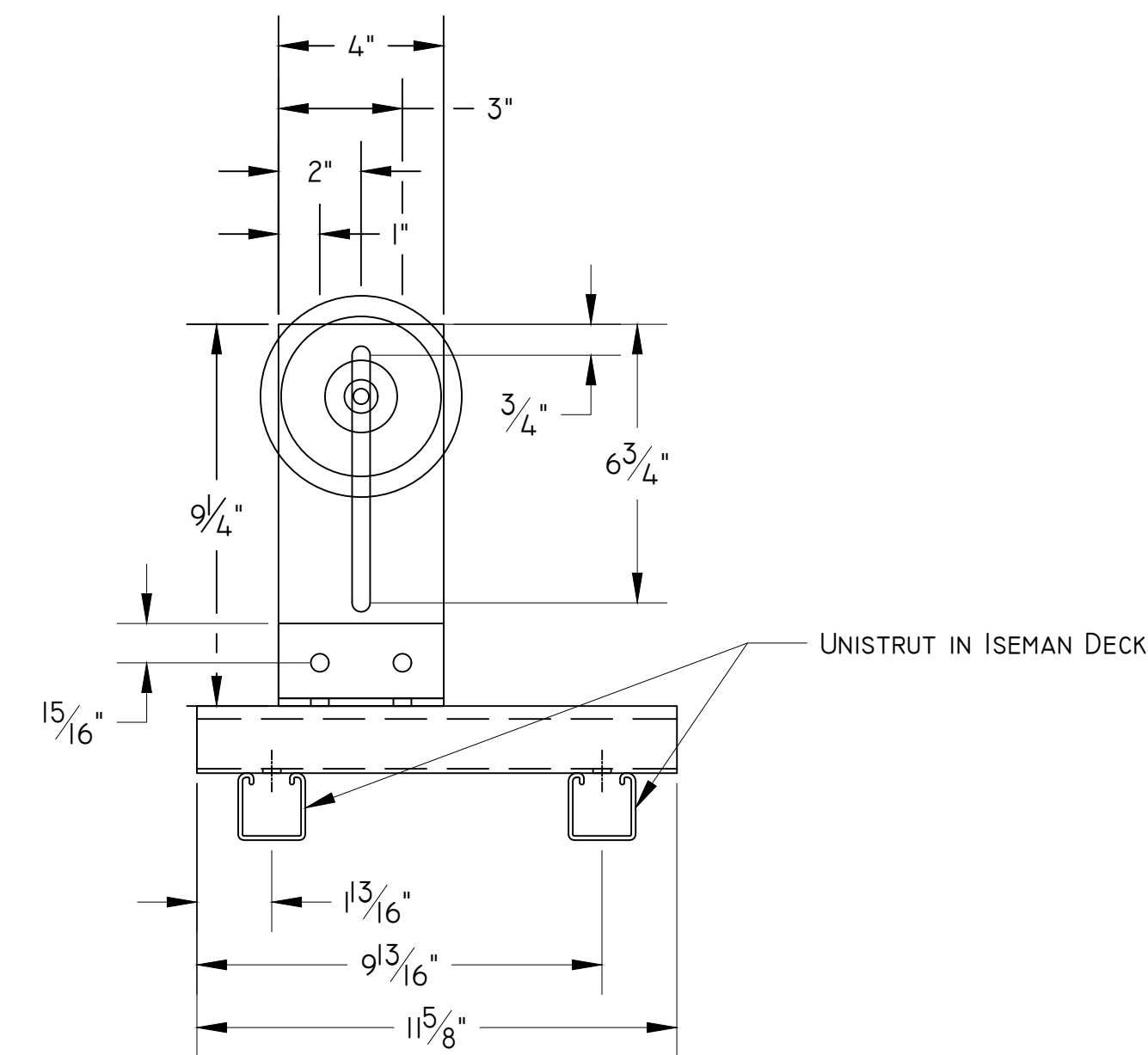
3 ROPE LOCK - FRONT VIEW
 800-04 1"x2" 16GA REC TUBE SCALE:3"-1"-0"
 2"x2" ANGLE
 FIT HOLES TO ROPE LOCK
 CUT UNISTRUT TO ATTACH INTO FLOOR
 7/16" HOLES FOR 3/8" HARDWARE



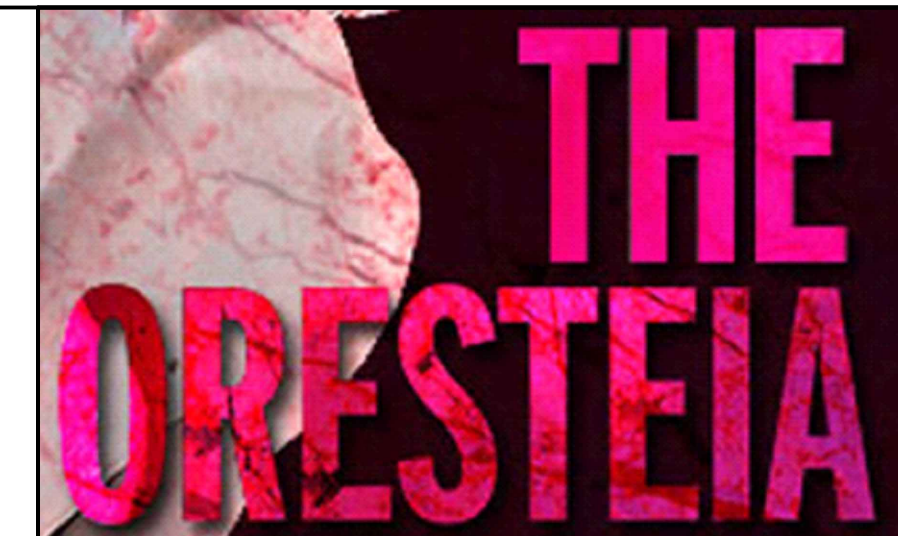
4 TENSION BLOCK - TOP VIEW
 800-04 3/16"x4" FB SCALE:3"-1"-0"
 3/16"x2"x2" ANGLE
 7/16" HOLES FOR 3/8" HARDWARE



5 TENSION BLOCK - FRONT VIEW
 800-04 3/16"x4" FB SCALE:3"-1"-0"
 3/16"x2"x2" ANGLE
 7/16" HOLES FOR 3/8" HARDWARE



6 TENSION BLOCK - SIDE VIEW
 800-04 3/16"x4" FB SCALE:3"-1"-0"
 3/16"x2"x2" ANGLE
 7/16" HOLES FOR 3/8" HARDWARE



YALE
 SCHOOL OF
 DRAMA

222 YORK STREET
 NEW HAVEN, CONNECTICUT 06520
 203.432.1234

NOTES:

- ROPE LOCK
 FIT HOLES TO PULLED ROPE LOCK
- TENSION BLOCK
 SLOT TO ADJUST TENSION IN ROPE LINE
 WILL ADD ONE KEEPER BOLT TO SLOT ONCE IN TENSION
 MAKE SURE SHEAVE IS ABLE TO SPIN FREELY
- ALL UNISTRUT WILL BE ADJUSTED IN THE SPACE AND BOLTED INTO THE ISEMAN DECK UNISTRUT
- BAG AND LABEL ALL SMALL HARDWARE PIECES AS THEY ARE COMPLETED
- COLLECT ASSOCIATED ATTACHMENT HARDWARE (BOLT SETS, UNISTRUT NUTS, ETC.) AS PIECES ARE COMPLETED

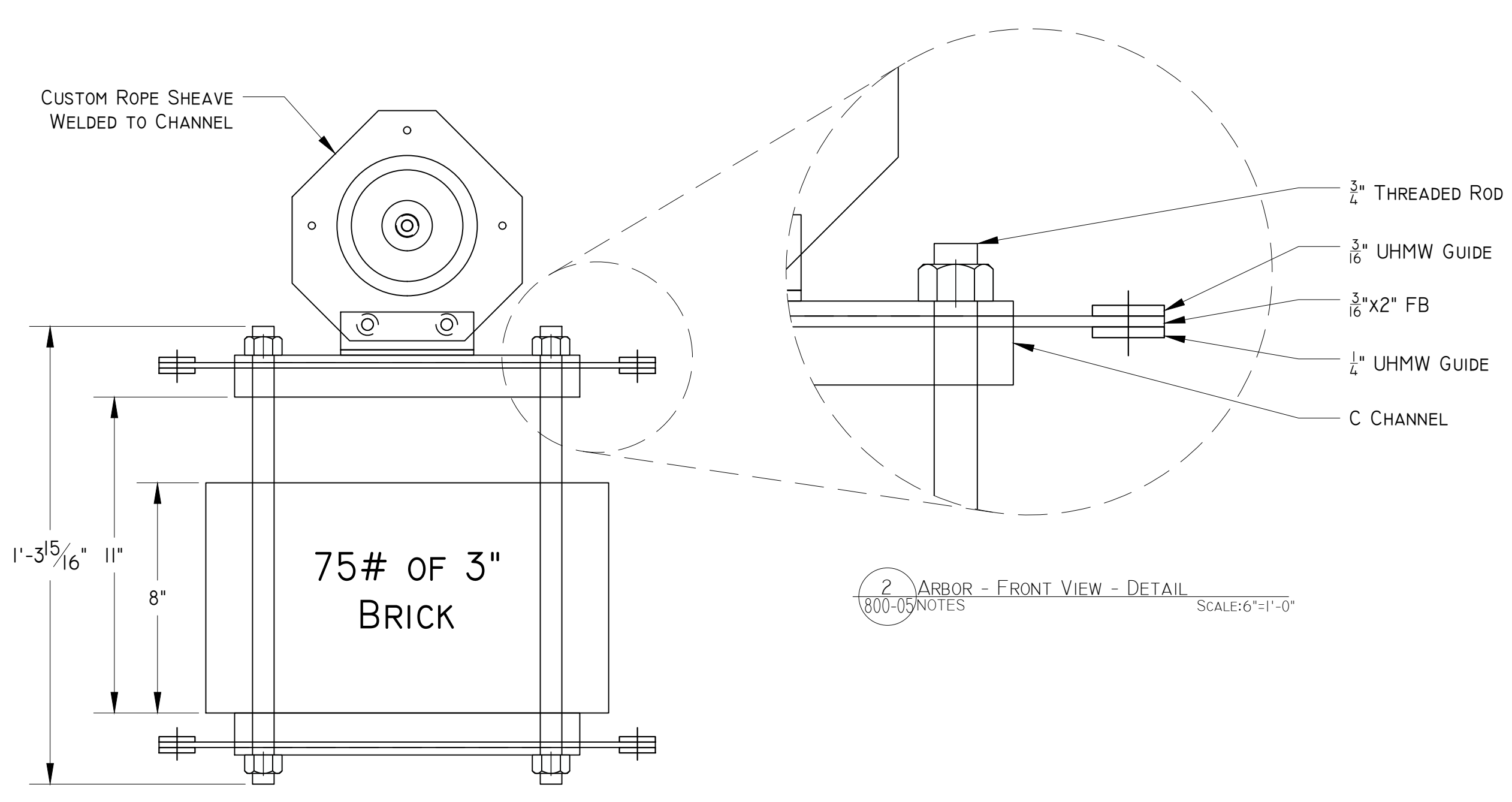
THE ORESTEIA

ROPE LOCK AND TENSION BLOCK

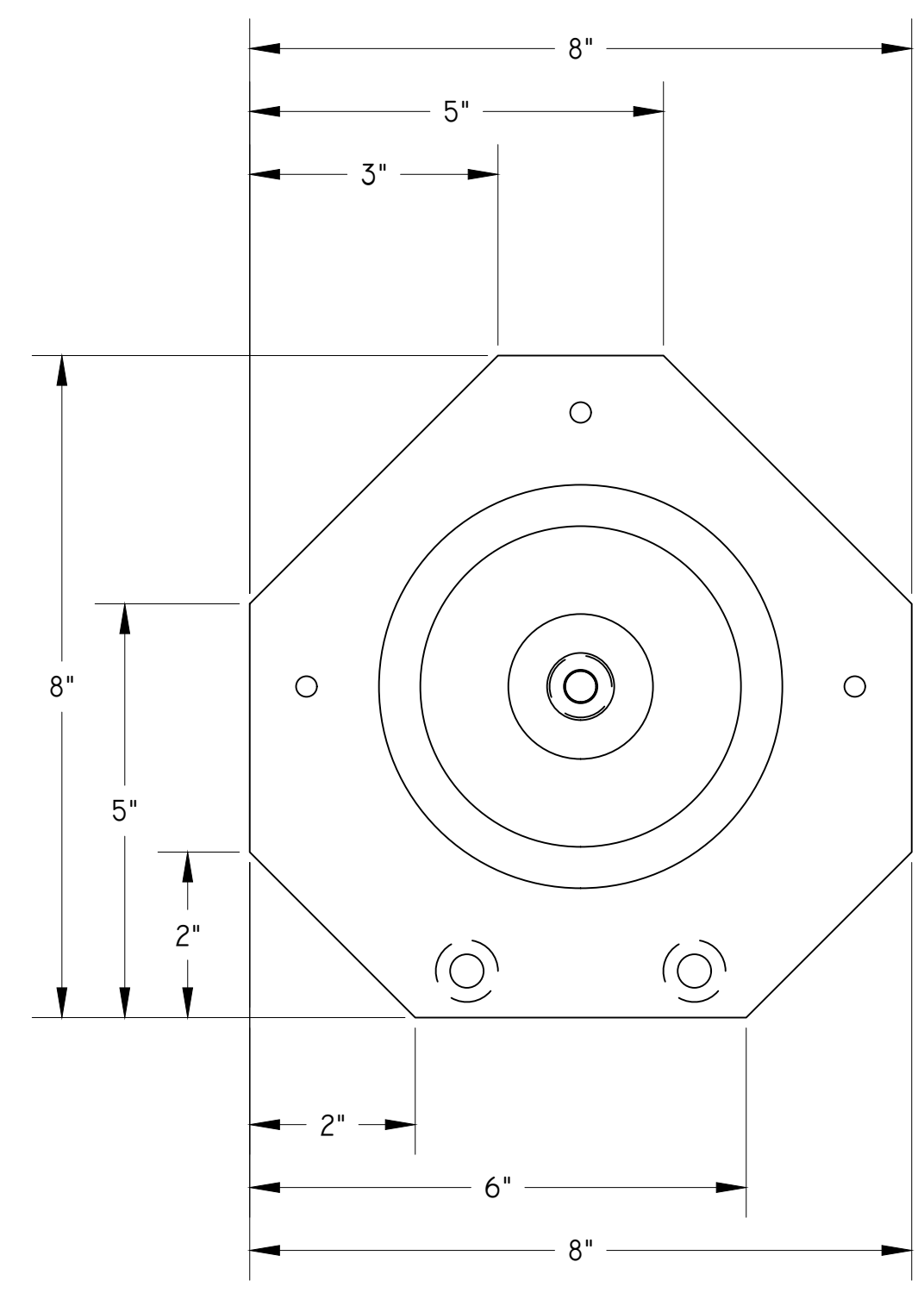
DIRECTOR: YAGIL ELIRAZ
 DESIGNER: FUFAN ZHANG
 TECH DIRECTOR: KRYSTIN MATSUMOTO
 DRAFTER: KRYSTIN MATSUMOTO
 SCALE: AS NOTED
 DATE: NOVEMBER 10, 2015
 REVDATE: 12/6/15 PLOTDATE: 12/6/15
 SHOW CODE: S205 SETS

800-04

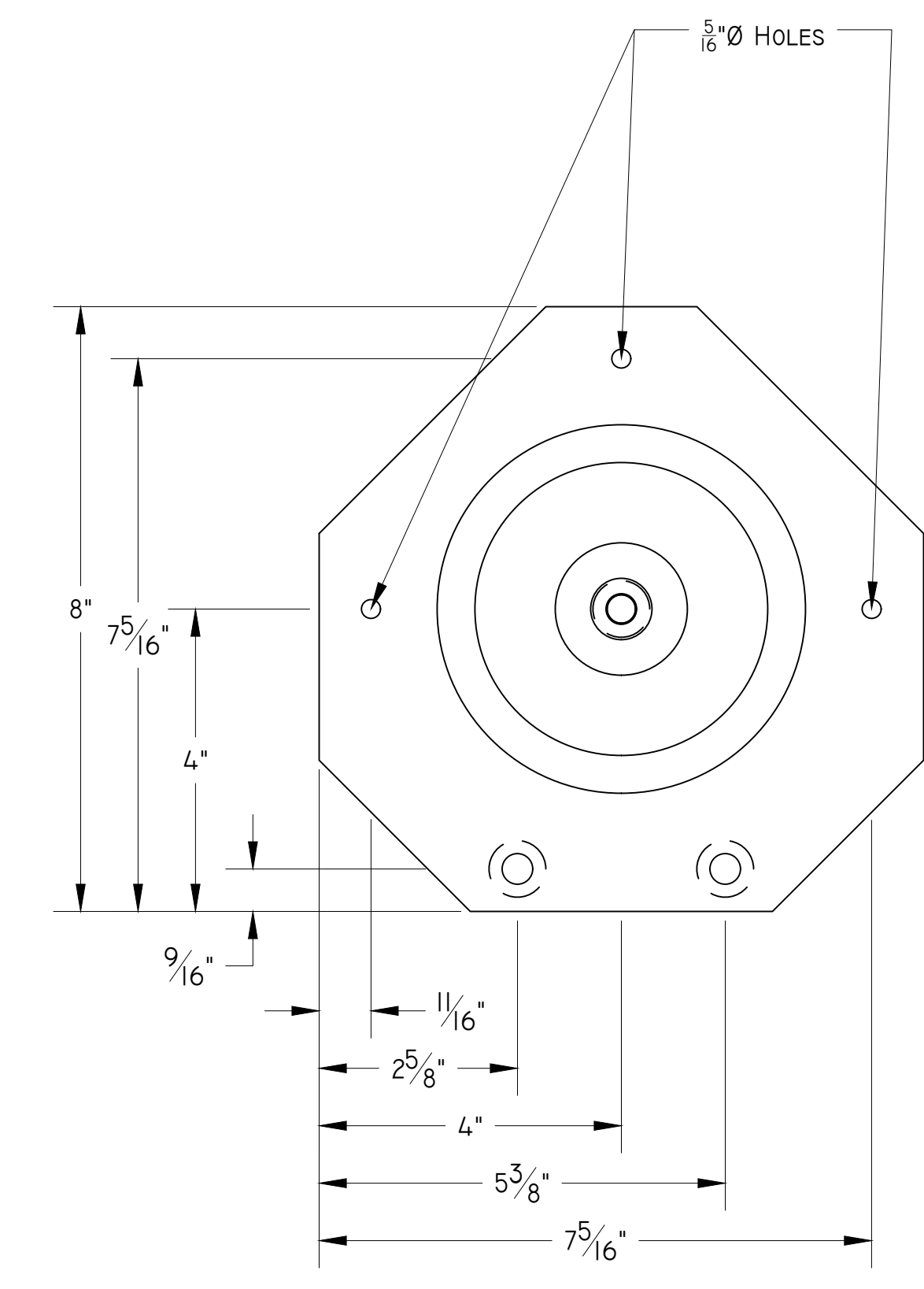
- NOTES:**
- WELD ON CUSTOM SHEAVE
 - $\frac{3}{4}$ " THREADED ROD
 - USE 8-32 MACHINE SCREWS TO ATTACH UHMW BLOCKS TO FLAT BAR
 - ROPE SHEAVE
 - BAG AND LABEL ALL SMALL HARDWARE PIECES AS THEY ARE COMPLETED
 - COLLECT ASSOCIATED ATTACHMENT HARDWARE (BOLT SETS, UNISTRUT NUTS, ETC.) AS PIECES ARE COMPLETED



2 ARBOR - FRONT VIEW - DETAIL
SCALE: 6"=1'-0"

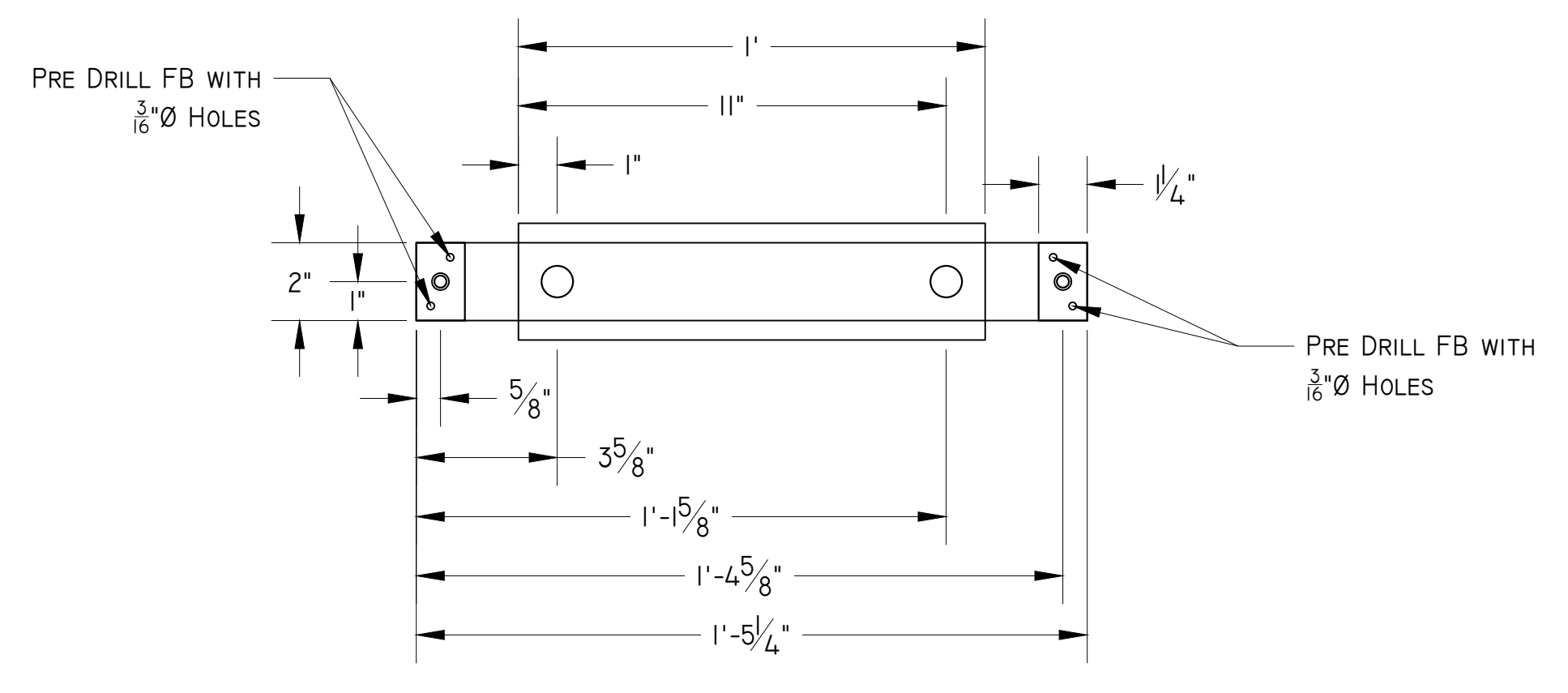


6 ARBOR - SHEAVE PLATE - FRONT VIEW - OVERALL DIMENSIONS
SCALE: 6"=1'-0"

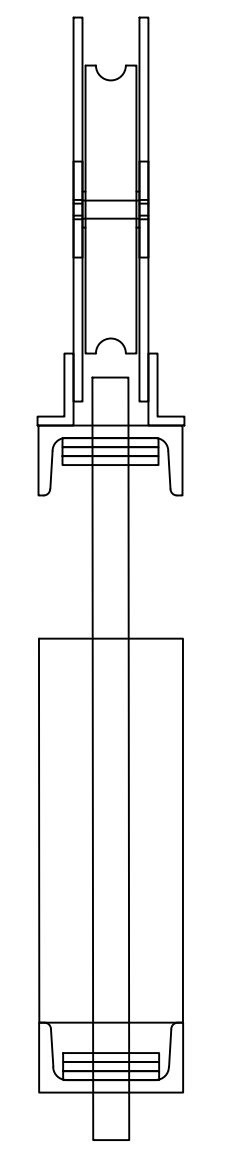


7 ARBOR - SHEAVE PLATE - FRONT VIEW - HOLE DIMENSIONS
SCALE: 6"=1'-0"

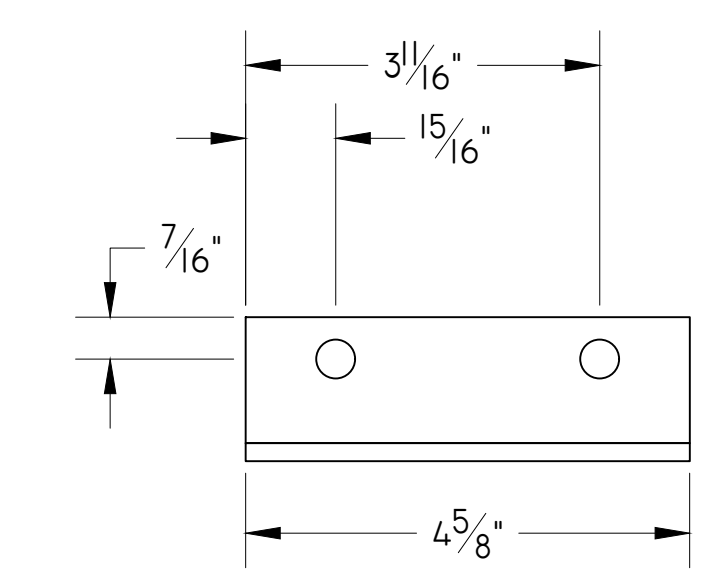
1 ARBOR - FRONT VIEW
SCALE: 3"=1'-0"



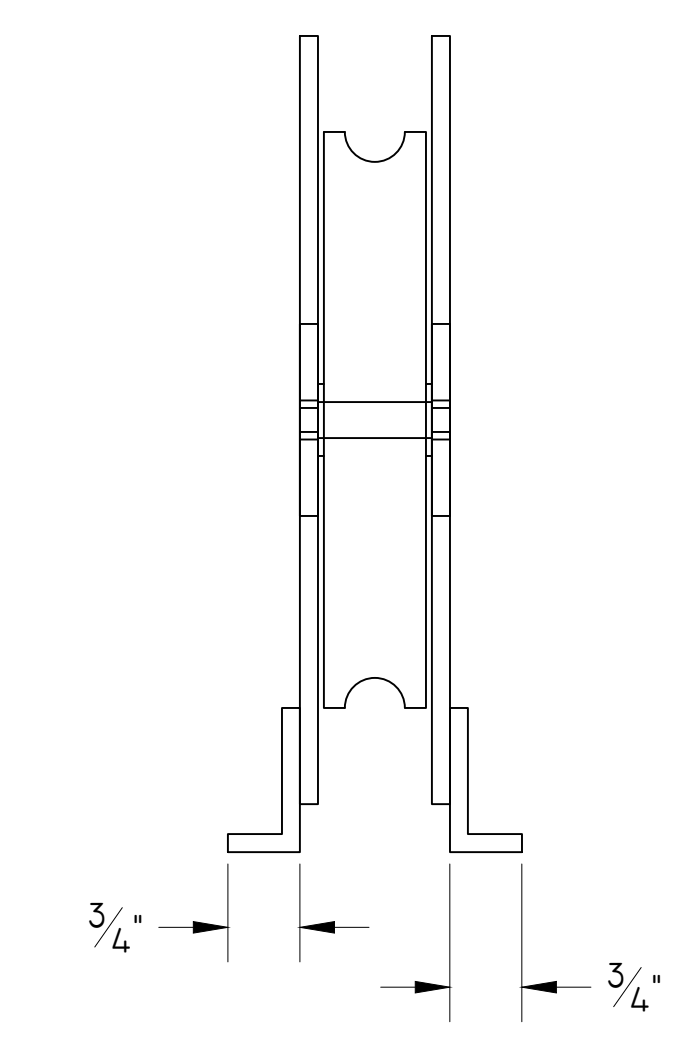
3 ARBOR - TOP
SCALE: 3"=1'-0"



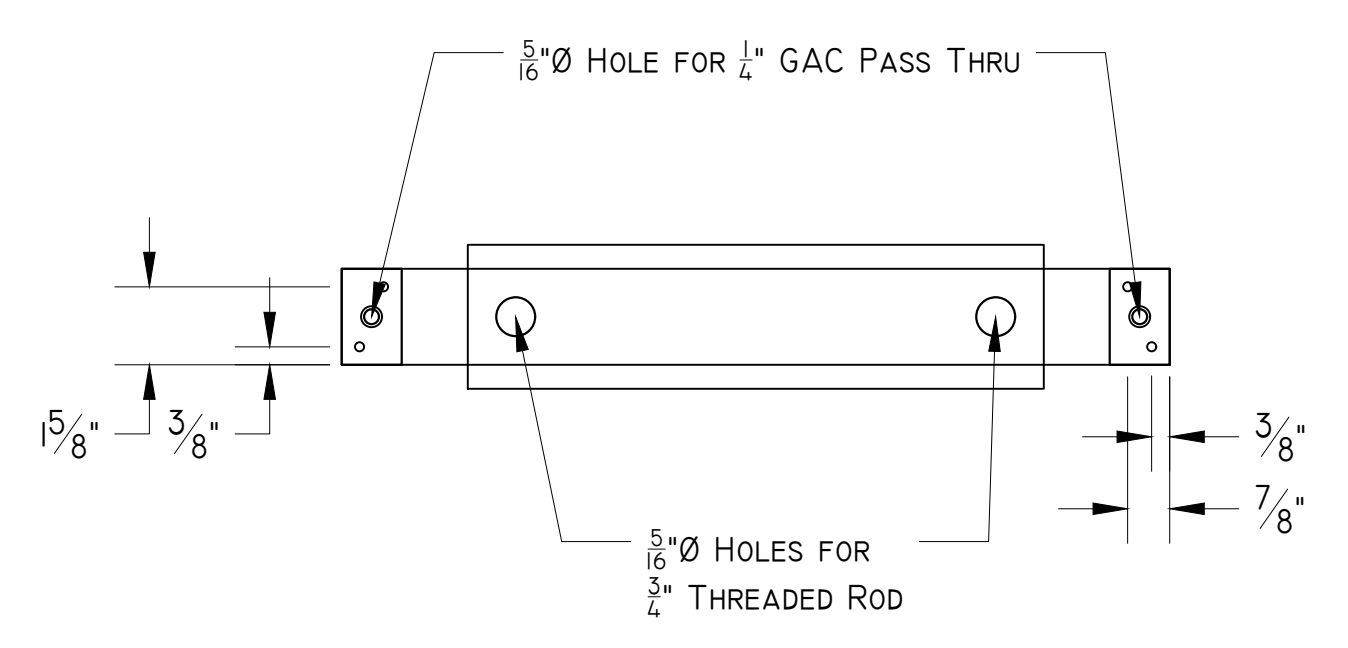
5 ARBOR - SIDE VIEW
SCALE: 3"=1'-0"



8 ARBOR - SHEAVE ANGLE - FRONT VIEW
SCALE: 6"=1'-0"



9 ARBOR - SHEAVE - SIDE VIEW
SCALE: 6"=1'-0"



4 ARBOR - TOP VIEW
SCALE: 3"=1'-0"

G:\PRODUCTIONS\2015-2016 SEASON\YS02 - ORESTEIA\SCENERY\TECHNICAL\02 DRAFTING\800--FLYING PERSON--K1.dwg

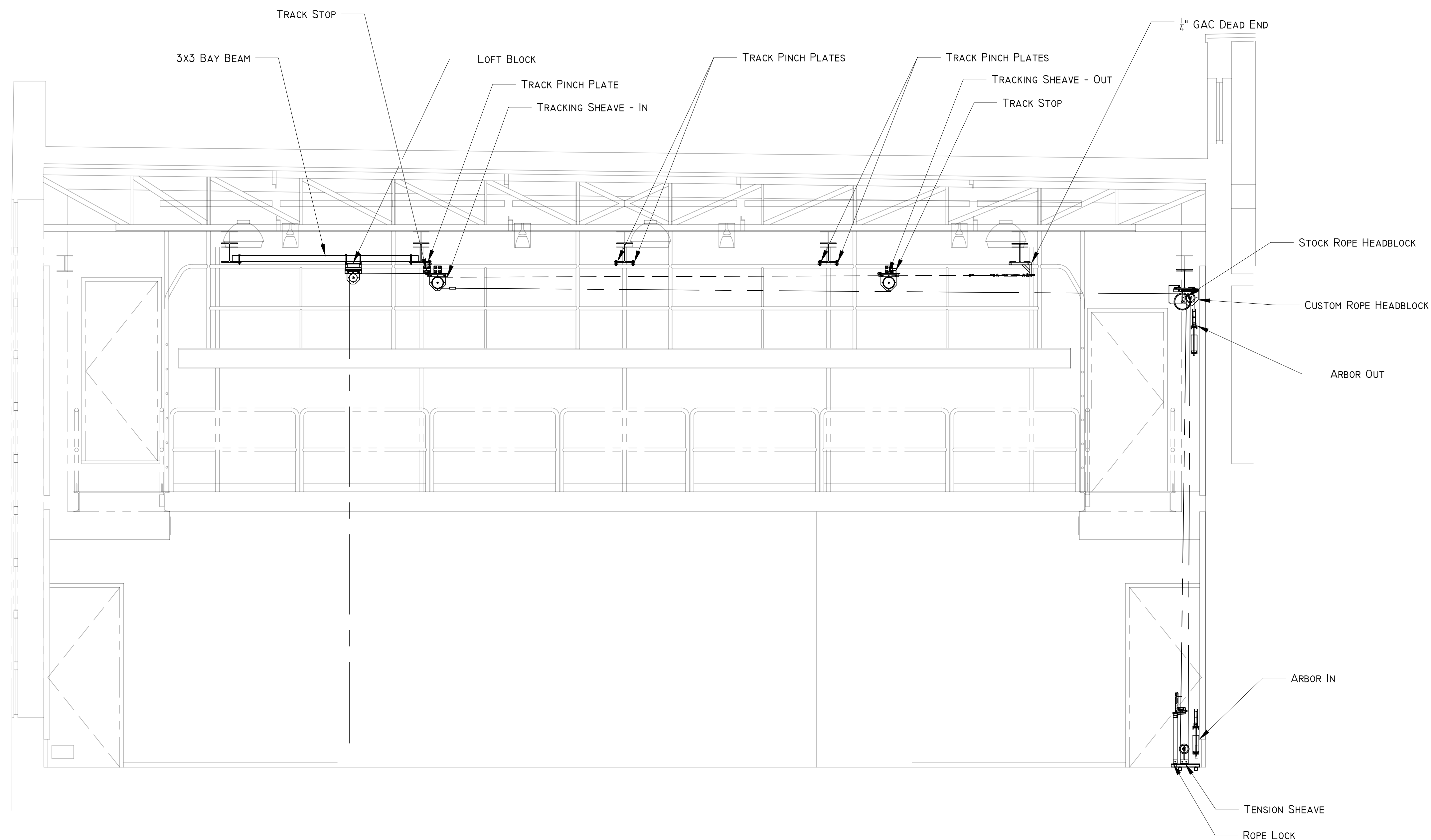
THE ORESTEIA	
FLYING PERSON - ARBOR	
DIRECTOR: YAGIL ELIRAZ	
DESIGNER: FUFAN ZHANG	
TECH DIRECTOR: KRYSTIN MATSUMOTO	
DRAFTER: KRYSTIN MATSUMOTO	
SCALE: AS NOTED	
DATE: NOVEMBER 18, 2015	800-05
REVDATE: 12/6/15 PLOTDATE: 12/6/15	
SHOW CODE: S205 SETS	

THE ORESTEIA

YALE
SCHOOL OF
DRAMA

222 YORK STREET
NEW HAVEN, CONNECTICUT 06520
203.432.1234

NOTES:



South Wall

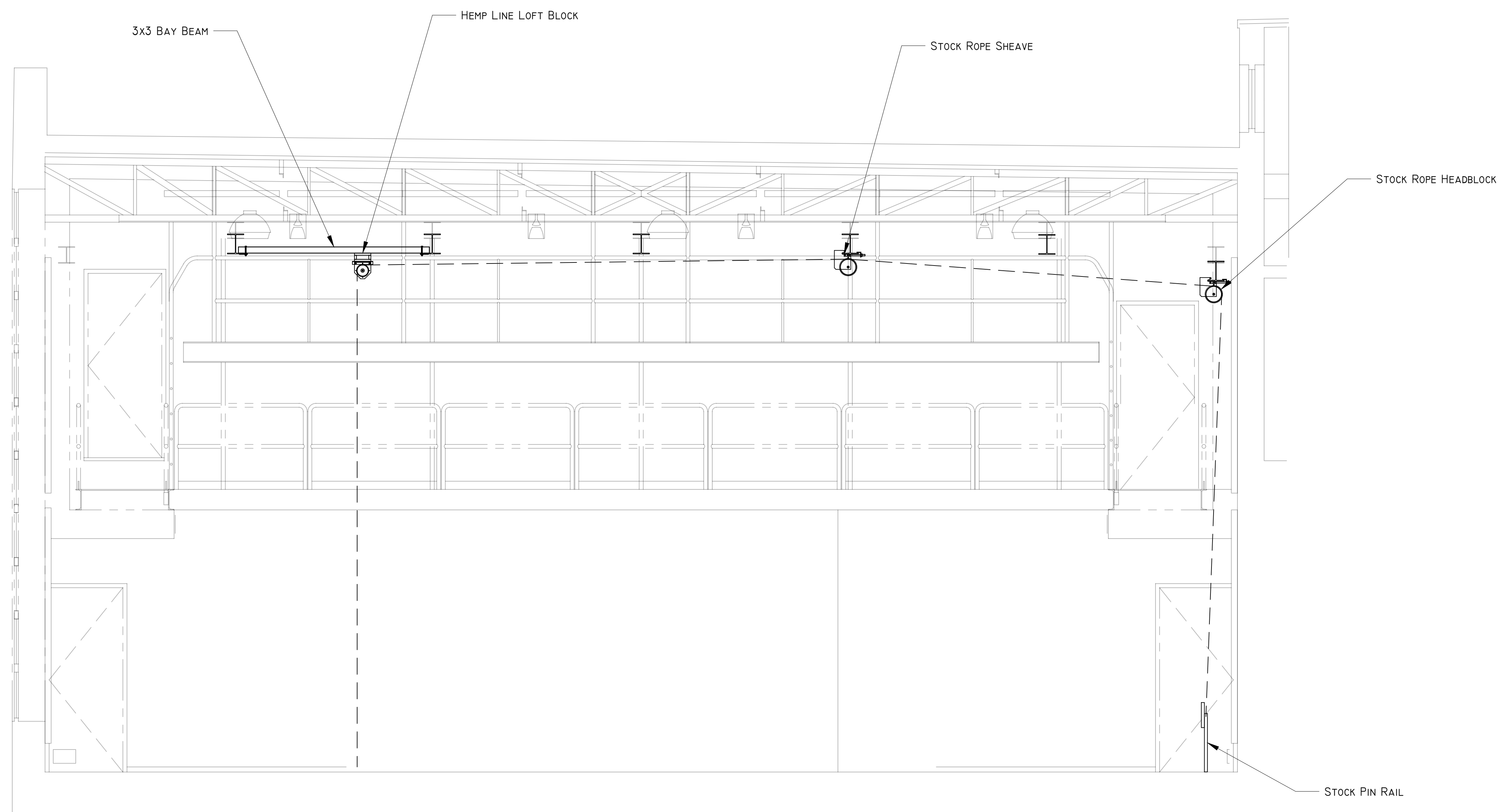
THE ORESTEIA	
FLYING RIG - FRONT VIEW	
DIRECTOR: YAGIL ELIRAZ	
DESIGNER: FUFAN ZHANG	
TECH DIRECTOR: KRYSTIN MATSUMOTO	
DRAFTER: KRYSTIN MATSUMOTO	
SCALE: AS NOTED	
DATE: NOVEMBER 20, 2015	800-07
REVDATE: 12/6/15 PLOTDATE: 12/6/15	
SHOW CODE: S205 SETS	

THE ORESTEIA

YALE
SCHOOL OF
DRAMA

222 YORK STREET
NEW HAVEN, CONNECTICUT 06520
203.432.1234

NOTES:



South Wall

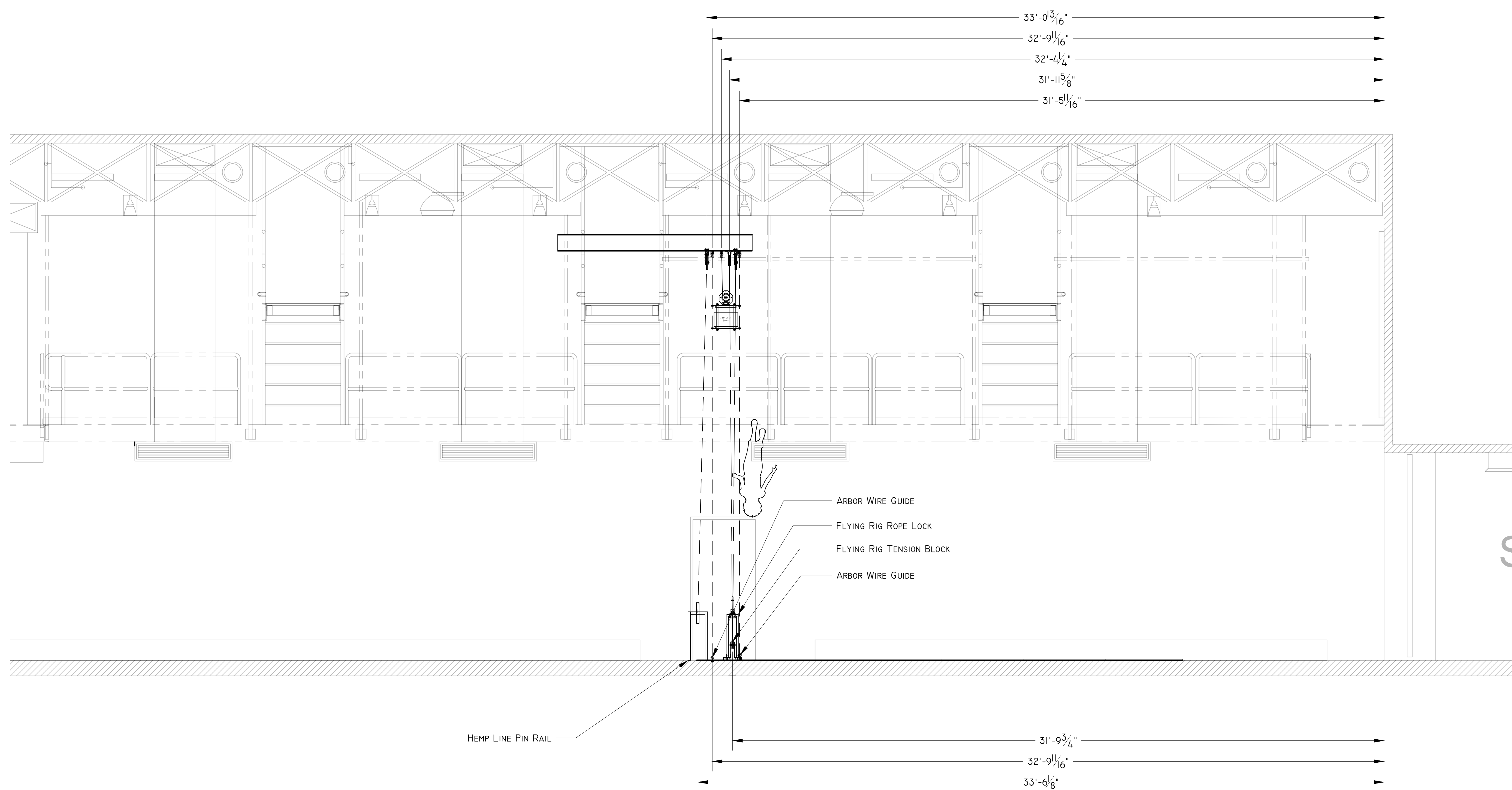
THE ORESTEIA	
HEMP SYSTEM - FRONT VIEW	
DIRECTOR: YAGIL ELIRAZ	
DESIGNER: FUFAN ZHANG	
TECH DIRECTOR: KRYSTIN MATSUMOTO	
DRAFTER: KRYSTIN MATSUMOTO	
SCALE: AS NOTED	
DATE: NOVEMBER 20, 2015	800-08
REVDATE: 12/6/15	PLOTDATE: 12/6/15
SHOW CODE: S205 SETS	

THE ORESTEIA

YALE
SCHOOL OF
DRAMA

222 YORK STREET
NEW HAVEN, CONNECTICUT 06520
203.432.1234

NOTES:



THE ORESTEIA

SIDE VIEW

DIRECTOR: YAGIL ELIRAZ

DESIGNER: FUFAN ZHANG

TECH DIRECTOR: KRYSTIN MATSUMOTO

DRAFTER: KRYSTIN MATSUMOTO

SCALE: AS NOTED

DATE: NOVEMBER 20, 2015

REVDATE: 12/6/15 | PLOTDATE: 12/6/15

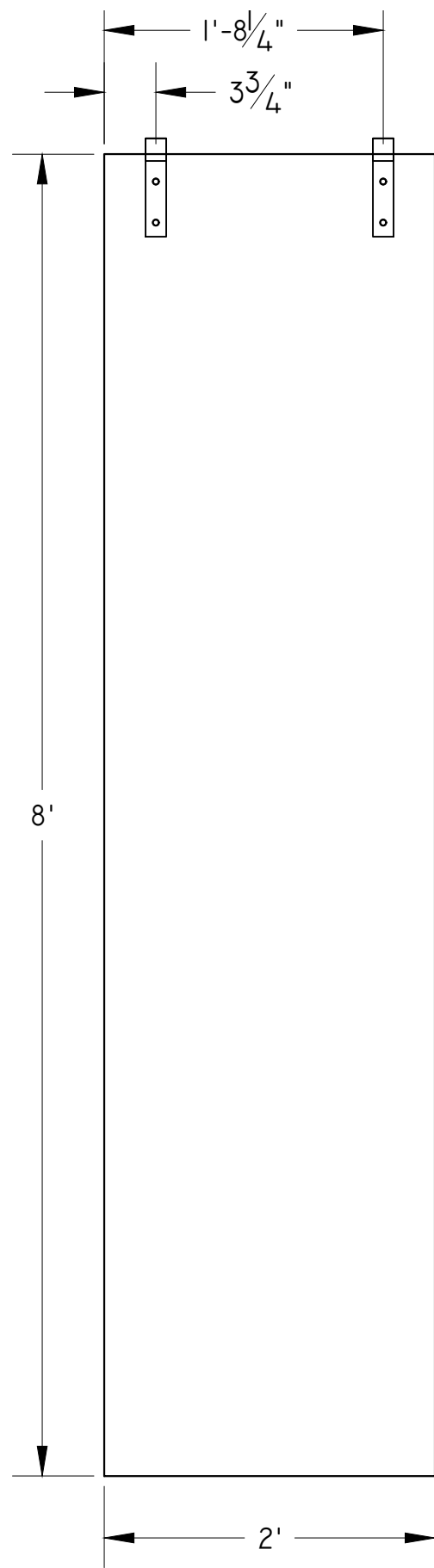
SHOW CODE: S205 SETS

800-09

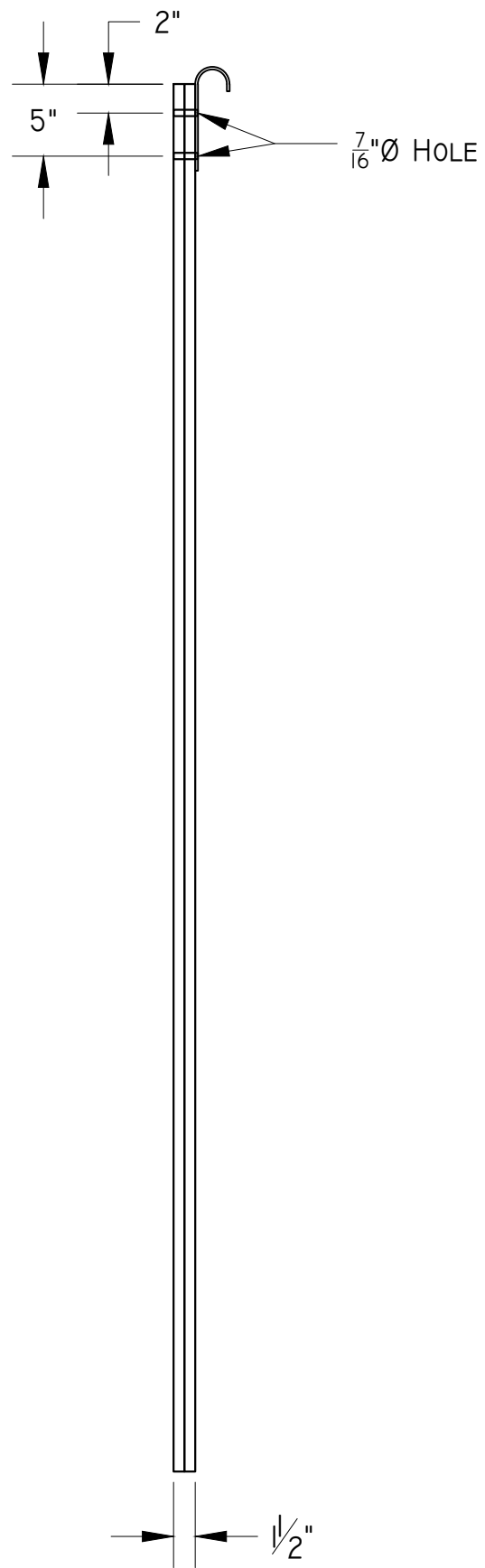
1 SIDE VIEW
800-09 NOTES

SCALE: 3/8"=1'-0"

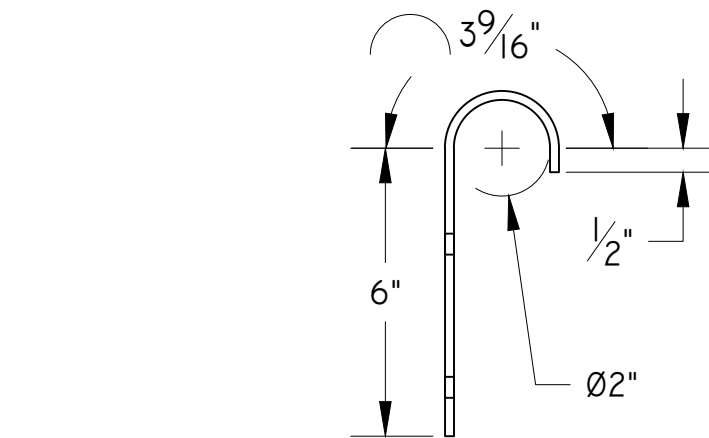
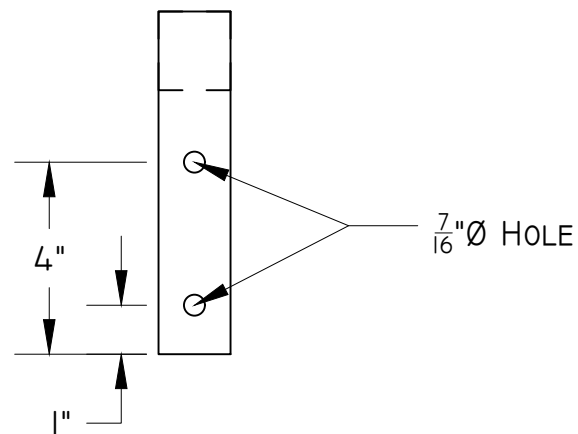
G:\PRODUCTIONS\2015-2016 SEASON\YS02 - ORESTEIA\SCENERY\TECHNICAL\02 DRAFTING\800--FLYING PERSON--K1.dwg



1 REHEARSAL PLANK - FRONT AND SIDE VIEWS
 800-10 TWO PIECES 3/4" PLY, LAMINATED
 3/16" x 1/2" FB HOOK
 SAND ALL EDGES
 WRAP IN SCRAP MUSLIN?
 SCALE: 1"=1'-0"



2 HOOK - FRONT VIEW - MAKE 2 TOTAL
 800-10 3/16" x 1/2" FB HOOK
 BENT TO FIT AROUND 1 1/2" SCH 40
 SCALE: 3"=1'-0"

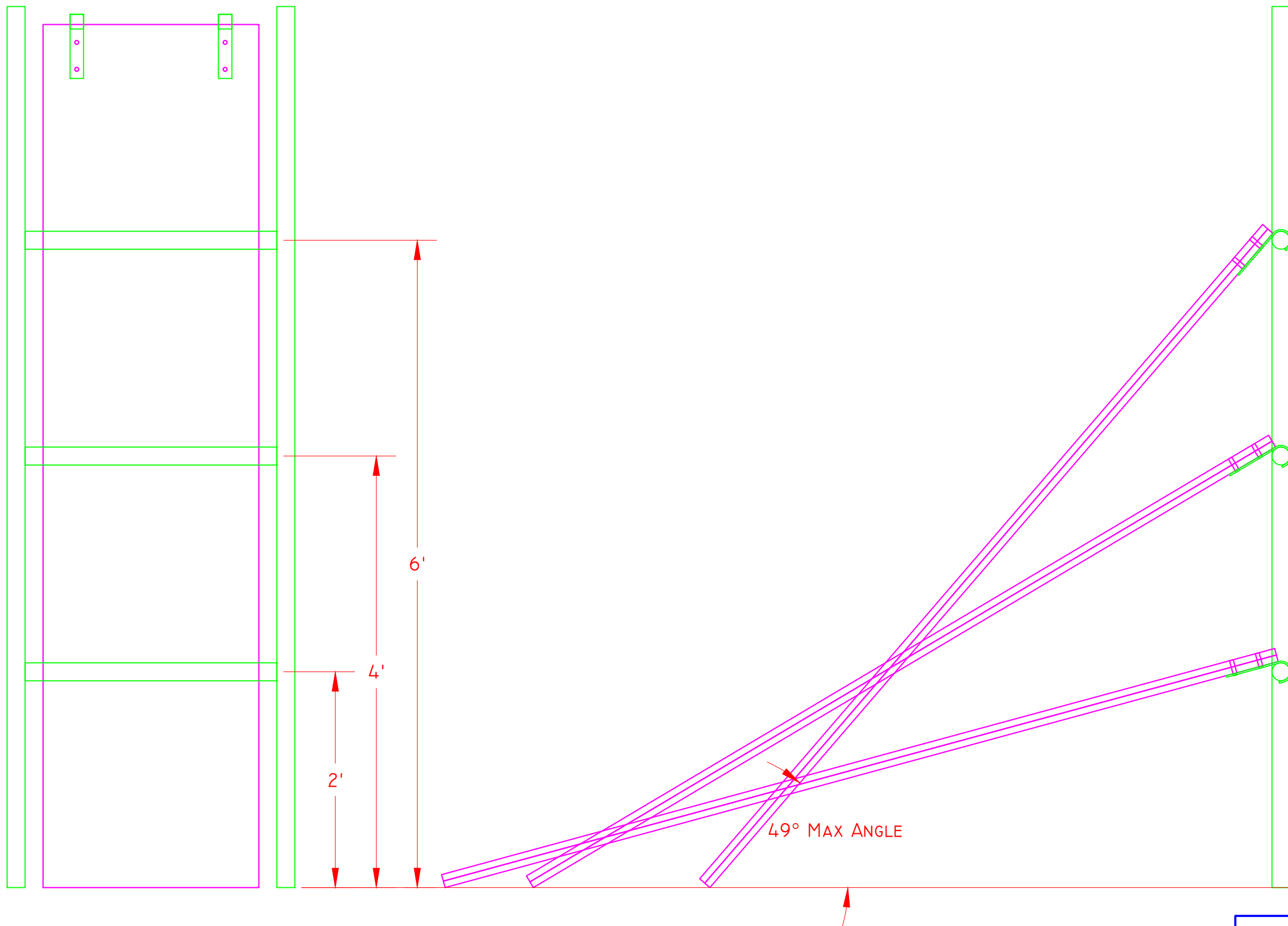


3 HOOK - SIDE VIEW - MAKE 2 TOTAL
 800-10 3/16" x 1/2" FB HOOK
 BENT TO FIT AROUND 1 1/2" SCH 40
 SCALE: 3"=1'-0"

NOTES:

- PLANK IS FOR ACTRESS DURING REHEARSAL TO BEGIN TRAINING AND GET USED TO THE FEELING OF BEING UPSIDE DOWN
- WILL SLOWLY INCREASE INCLINE ANGLE OF PLANK OVER THE COURSE OF TRAINING
- WILL HOOK ONTO SCHEDULE 40 "LADDER" STRUCTURE ON WEIGHTED BOOM BASES
- ALL HOLES 7/16" Ø FOR 3/8" HARDWARE
- ASSEMBLE UPON COMPLETION

THE ORESTEIA			
REHEARSAL PLANK			
DIRECTOR: Y. ELIRAZ	SCALE: AS NOTED	800-10	
DESIGNER: F. ZHANG	DATE: DATE		
TECH DIRECTOR: K. MATSUMOTO	REVDATE: 12/6/15		PLOTDATE: 12/6/15
DRAFTER: K. MATSUMOTO	SHOW CODE: S205 SETS		



ADD SANDBAGS TO WEIGH DOWN THE BOOM BASES
 75# PER BASE (2 BAGS TOTAL) FROM ISEMAN
 6 CHEESEBOROUGH'S FROM ISEMAN

THE ORESTEIA			
REHEARSAL FLYING TRAINING			
DIRECTOR: Y. ELIRAZ	SCALE: AS NOTED	800-II	
DESIGNER: F. ZHANG	DATE: 11/15/15		
TECH DIRECTOR: K. MATSUMOTO	REVDATE: 12/6/15		PLOTDATE: 12/6/15
DRAFTER: K. MATSUMOTO	SHOW CODE: S205 SETS		